

# LIBRARY DESIGN AWARDS CONFERENCE

LIBRARY AT THE DOCK, MELBOURNE

## INNOVATIVE LIBRARY SPACES DRIVEN BY CULTURE, CONTEXT + THE USER EXPERIENCE

GRAHAM LEGERTON + CHRIS GILL  
MONDAY 19 JUNE



SITE





PHOTO BY SHANTANU STARICK

## NATURAL BEAUTY





PHOTO BY SHANTANU STARICK

## HISTORY, SPIRITUALITY + SERENITY





SIMPLICITY





# REFLECTION





COMFORT / WARMTH

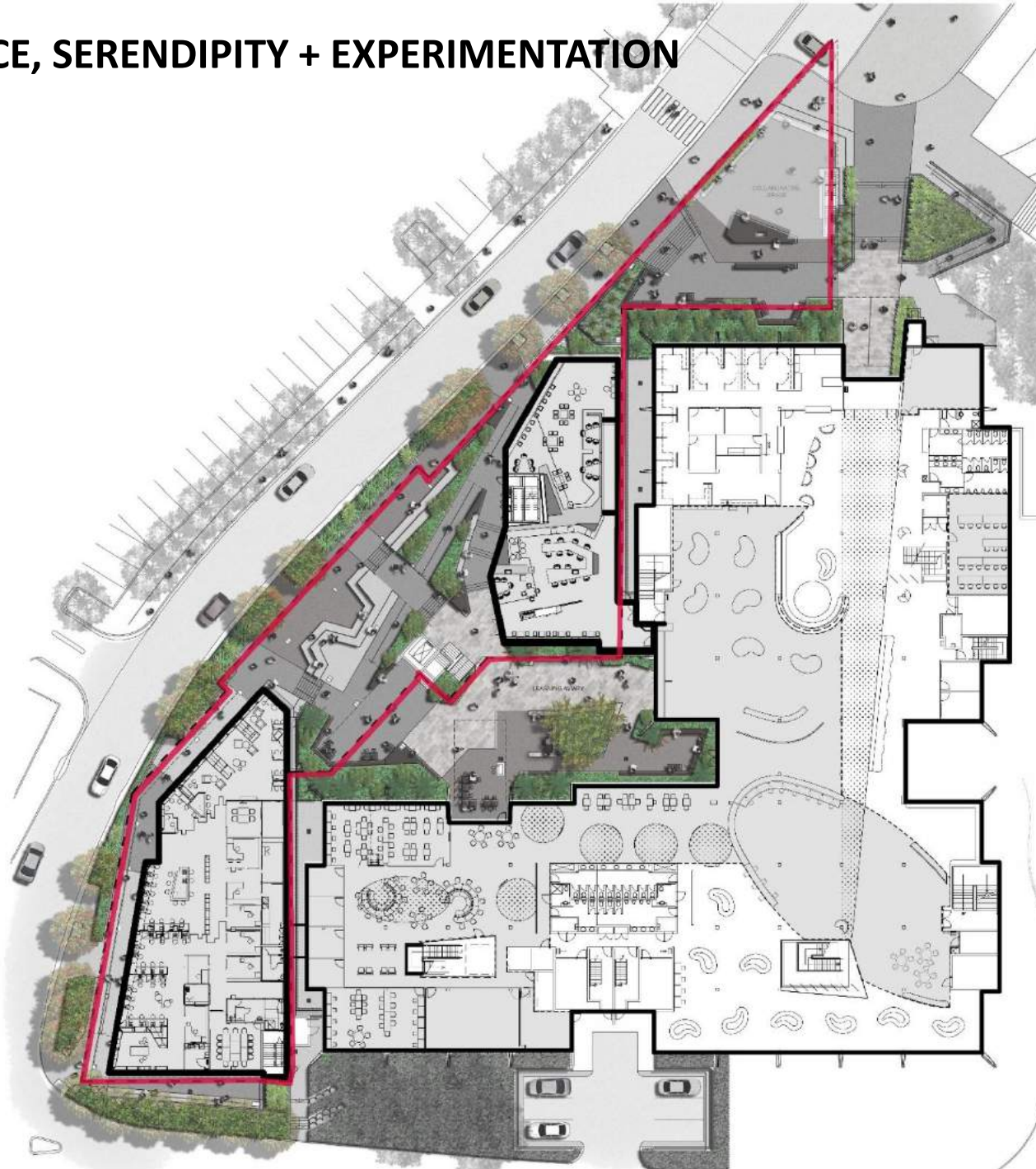




**The most sustainable building  
is often one we do not have to  
build.**



# CHOICE, SERENDIPITY + EXPERIMENTATION



GRIFFITH UNIVERSITY LEARNING COMMONS  
2014



PLACES FOR PEOPLE  
OVERALL CEFPI / A4LE WINNER 2014  
AIA COMMENDATION



We are in the business of  
conversations.

Conversations spark creativity +  
realise best value.



## HUMAN CENTRED

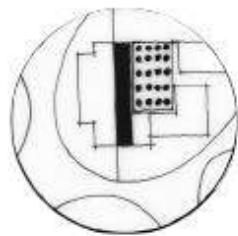




Create places of soul + joy. This  
heightens the likelihood of  
engaging meaningfully with  
people.



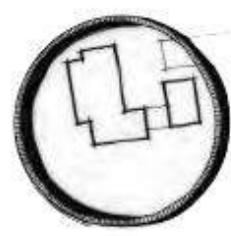
# CONNECTIVITY + OUTREACH



Potential to create a volumetric exhibition space + civic landscape



Immediate site infrastructure  
A connected, panoramic site



Imagine an environment that epitomises "wholeness" + prioritises people



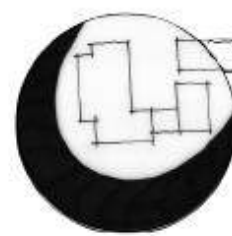
Axial links complement the campus geometries + unite the concept with the city + Mt Cootha



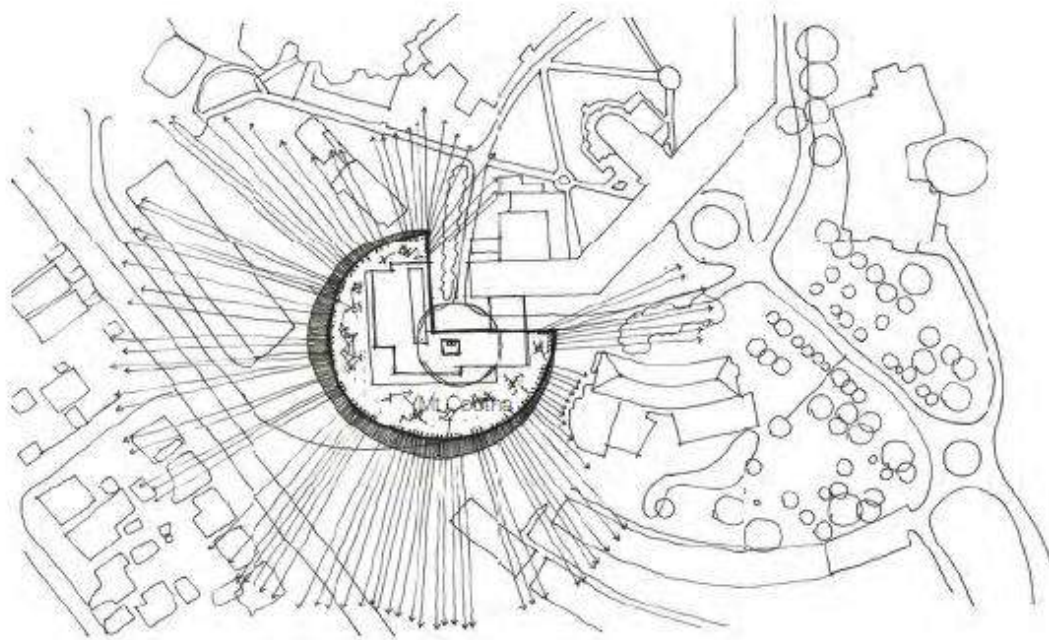
Prominent wider site features  
"lasting impressions"



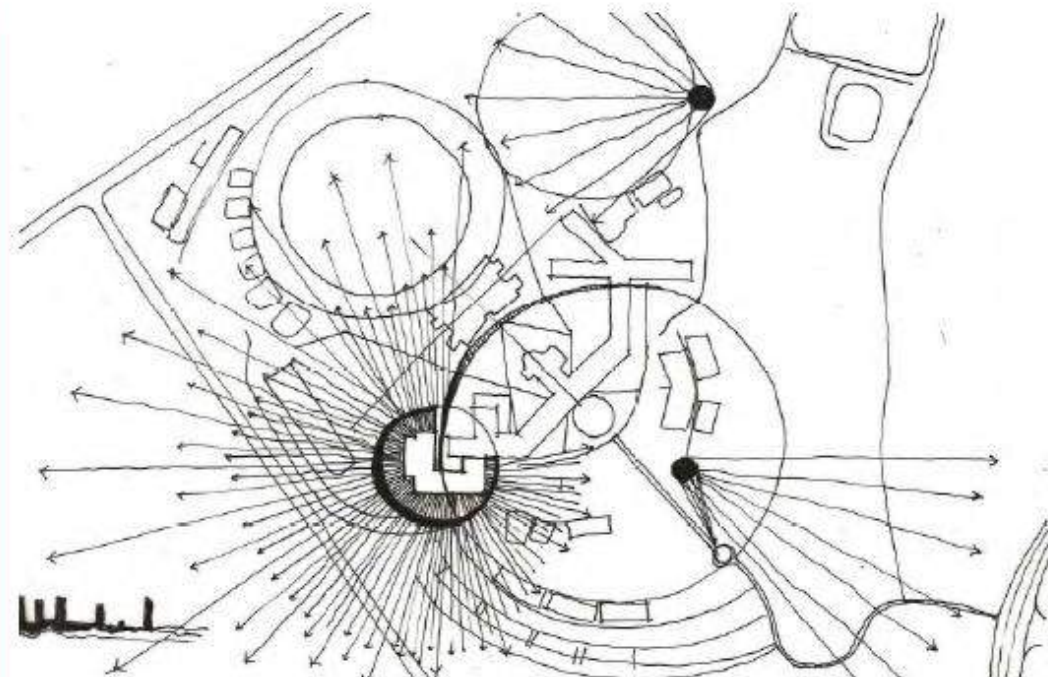
Existing areas inspiring ideas of tradition, innovation + progression



Enveloping + transforming the existing library to create a destination + sense of place / wholeness



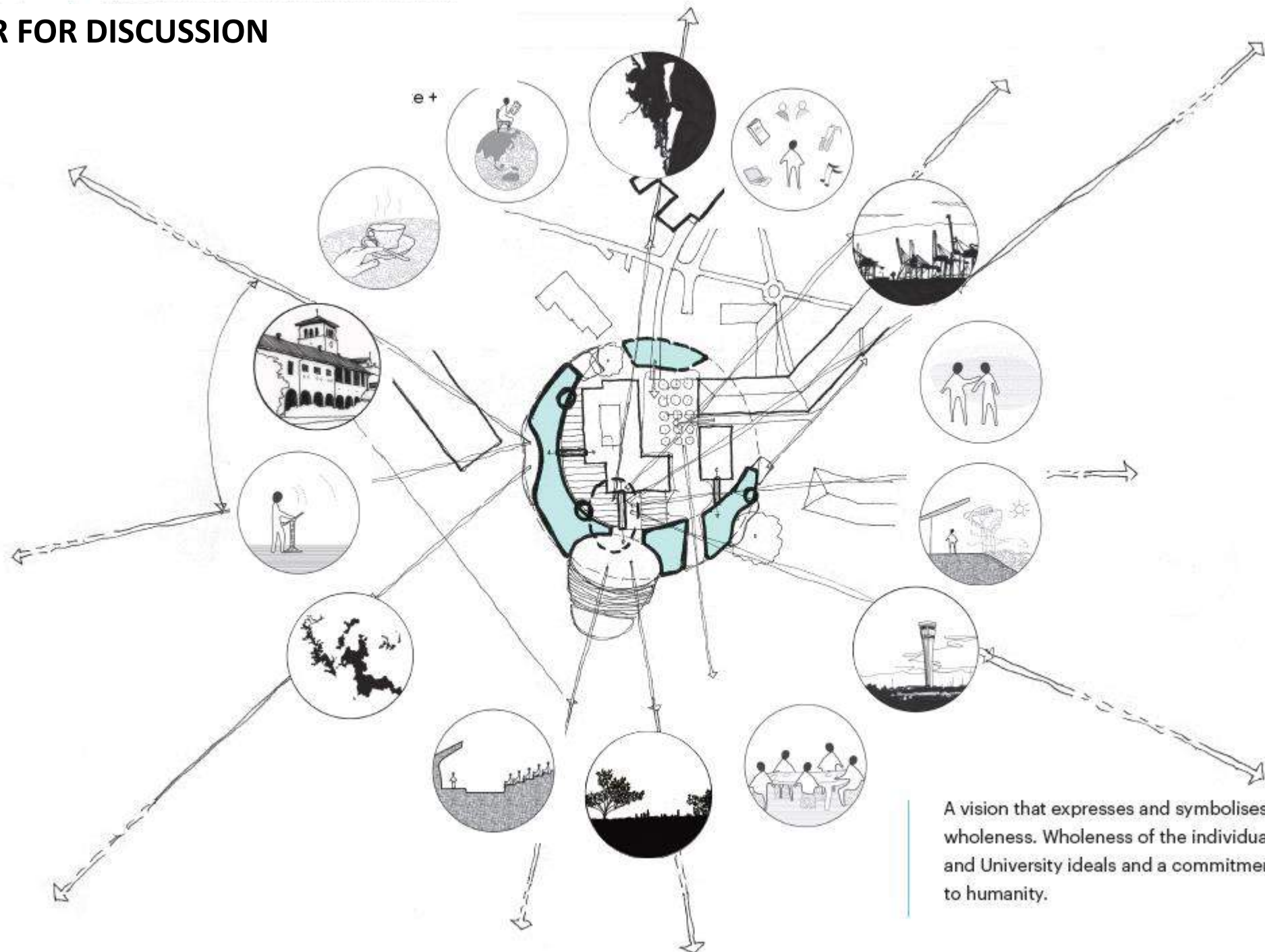
An arena of learning + innovation with panoramic views + kinetic collaborations.



Inspired by context.



# AN ENABLER FOR DISCUSSION



A vision that expresses and symbolises wholeness. Wholeness of the individual and University ideals and a commitment to humanity.



# EXPRESS UNITY, WHOLENESS + COMMUNITY IN A PHYSICAL FORM

## PLACE MAKING

ENVELOPING

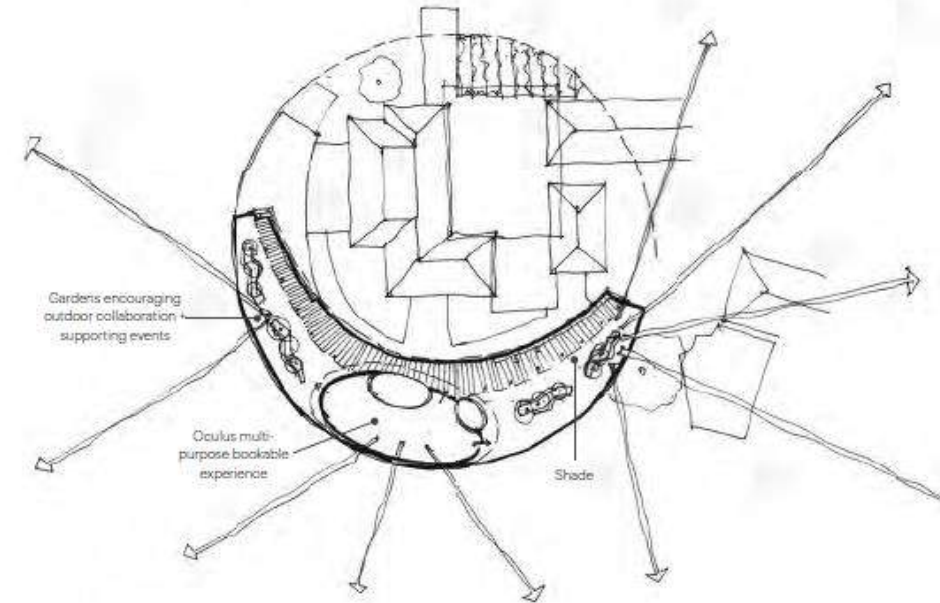
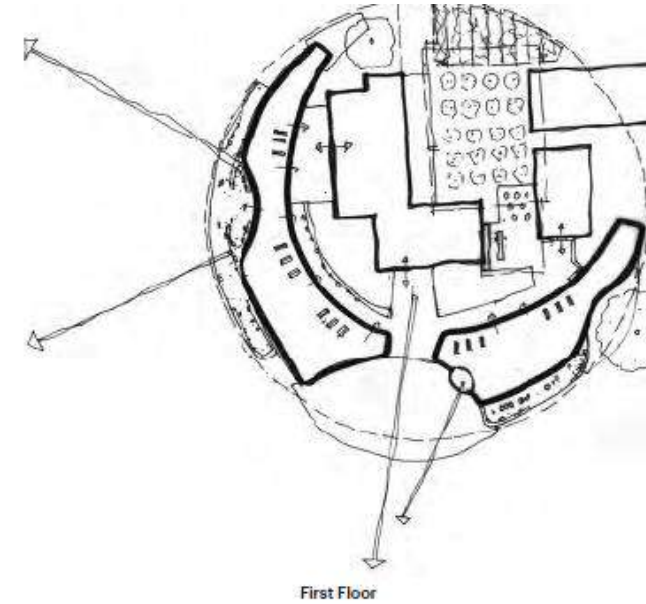
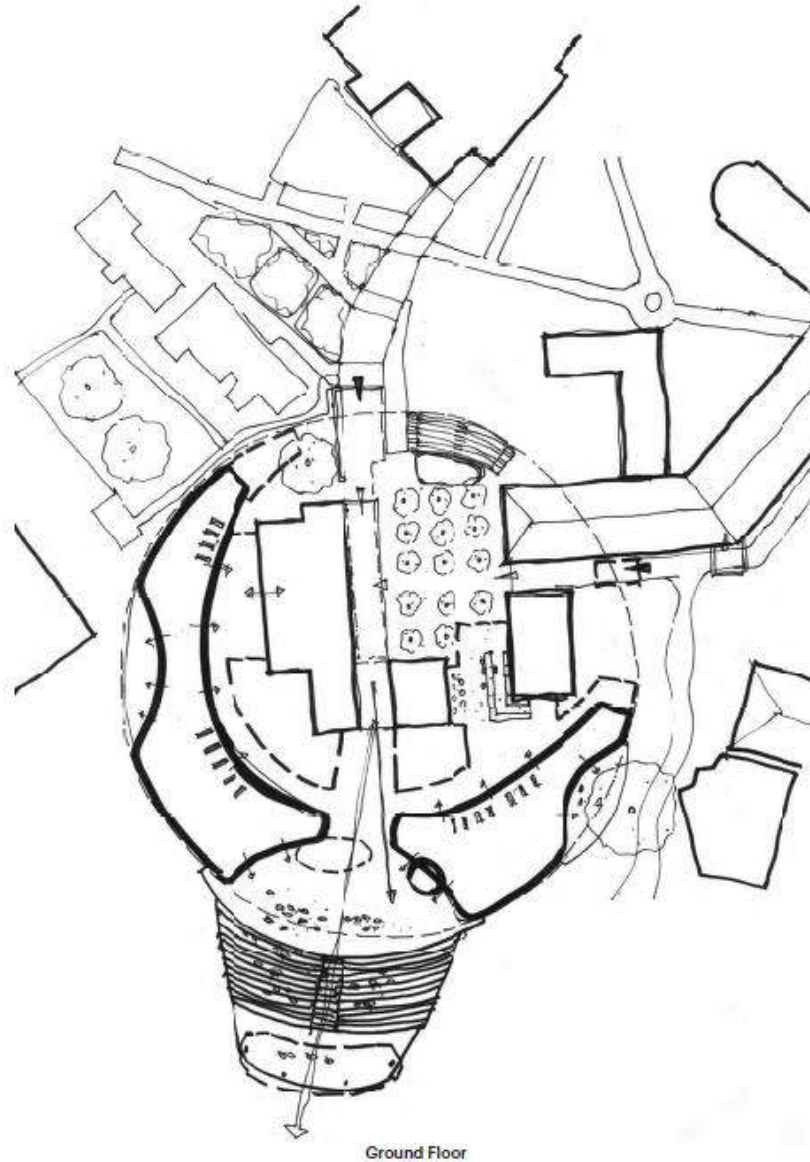
ECOLOGICAL GARDEN

CITY TERRACE

EXISTING TREES

PARTNERING

DESTINATION





# AN 'ARENA OF LEARNING' – BEACON FOR BANYO

## ATTRIBUTES

PURE

SIMPLE

PERMEABLE

MEMORABLE





**ARCHWAYS..GREENERY..VIEWS..ARENAS...FRINGES...TRANSITIONS...COMFORT**

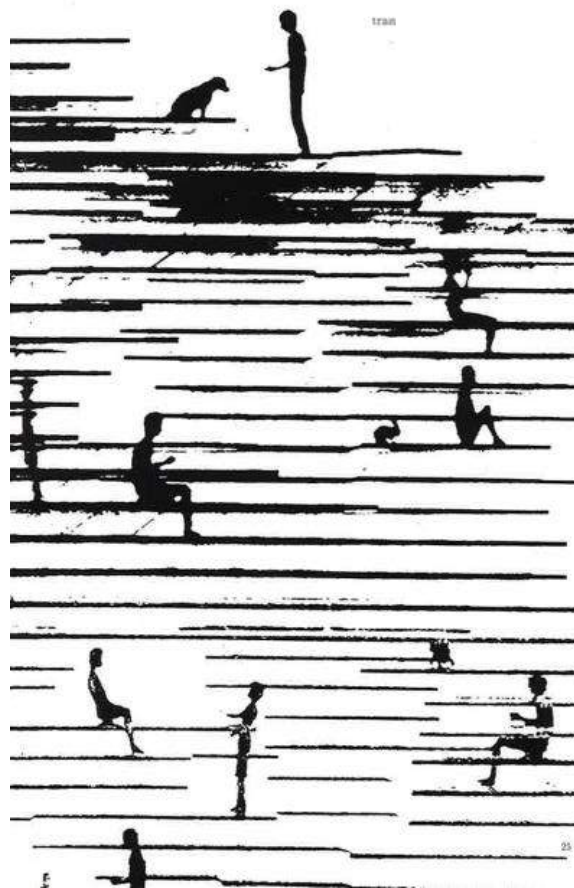




# SOUL + SIMPLICITY



*'I love gardens. Gardens do not reject people'.*



*35cm increments*



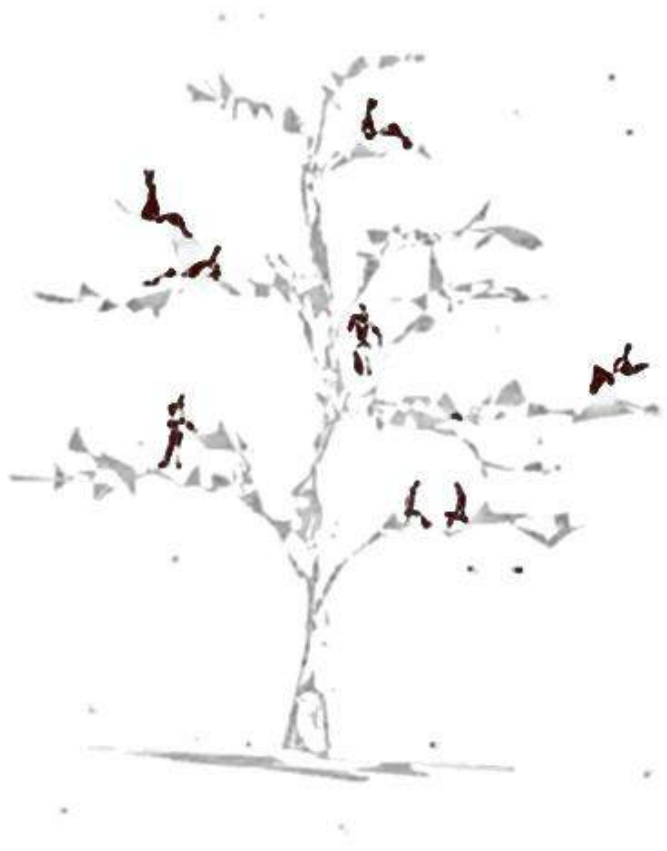
*'World is made for dualities.'*

*'Exteriority is not architecture. Interiority is not architecture.  
Architecture exists in how interiority + exteriority are connected.'*

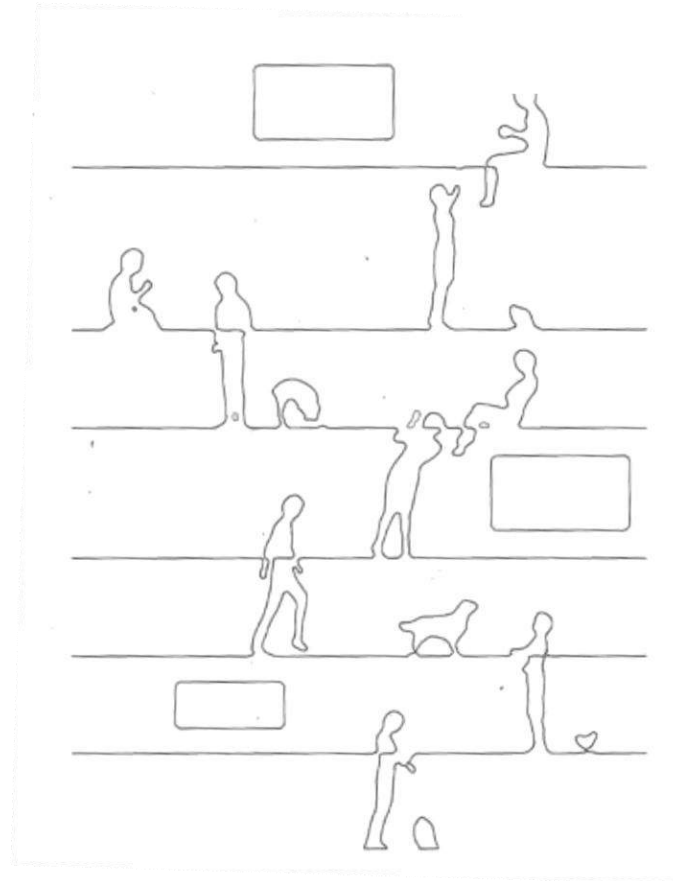
*Sou Fujimoto, Primitive Future*



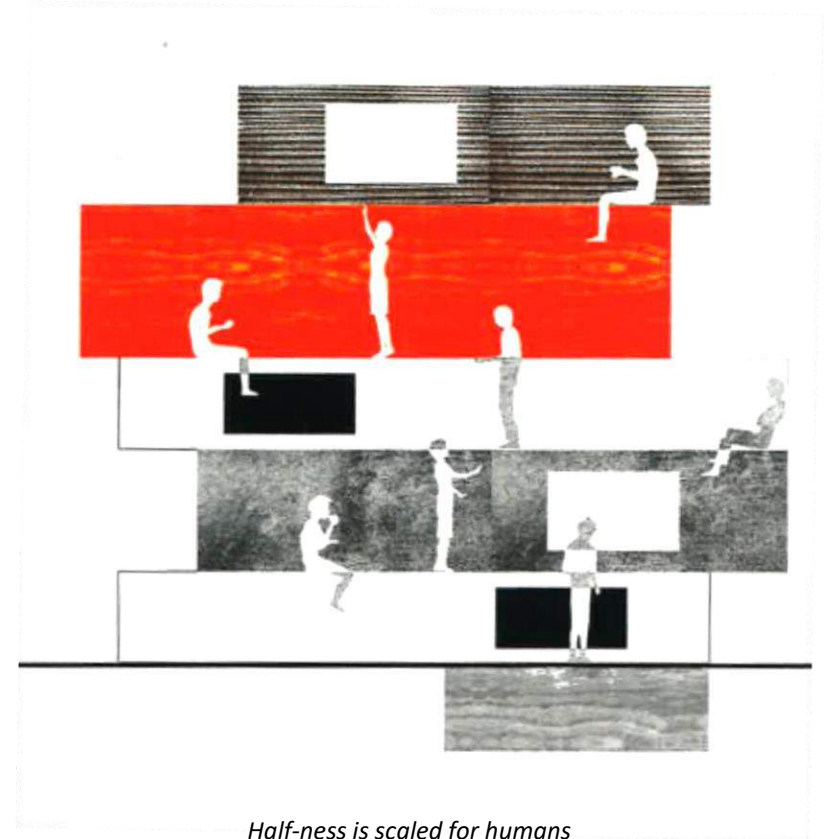
# HALF-NESS



*'Totality formed by interrelationships'.*



*Interplay*



*Half-ness is scaled for humans*

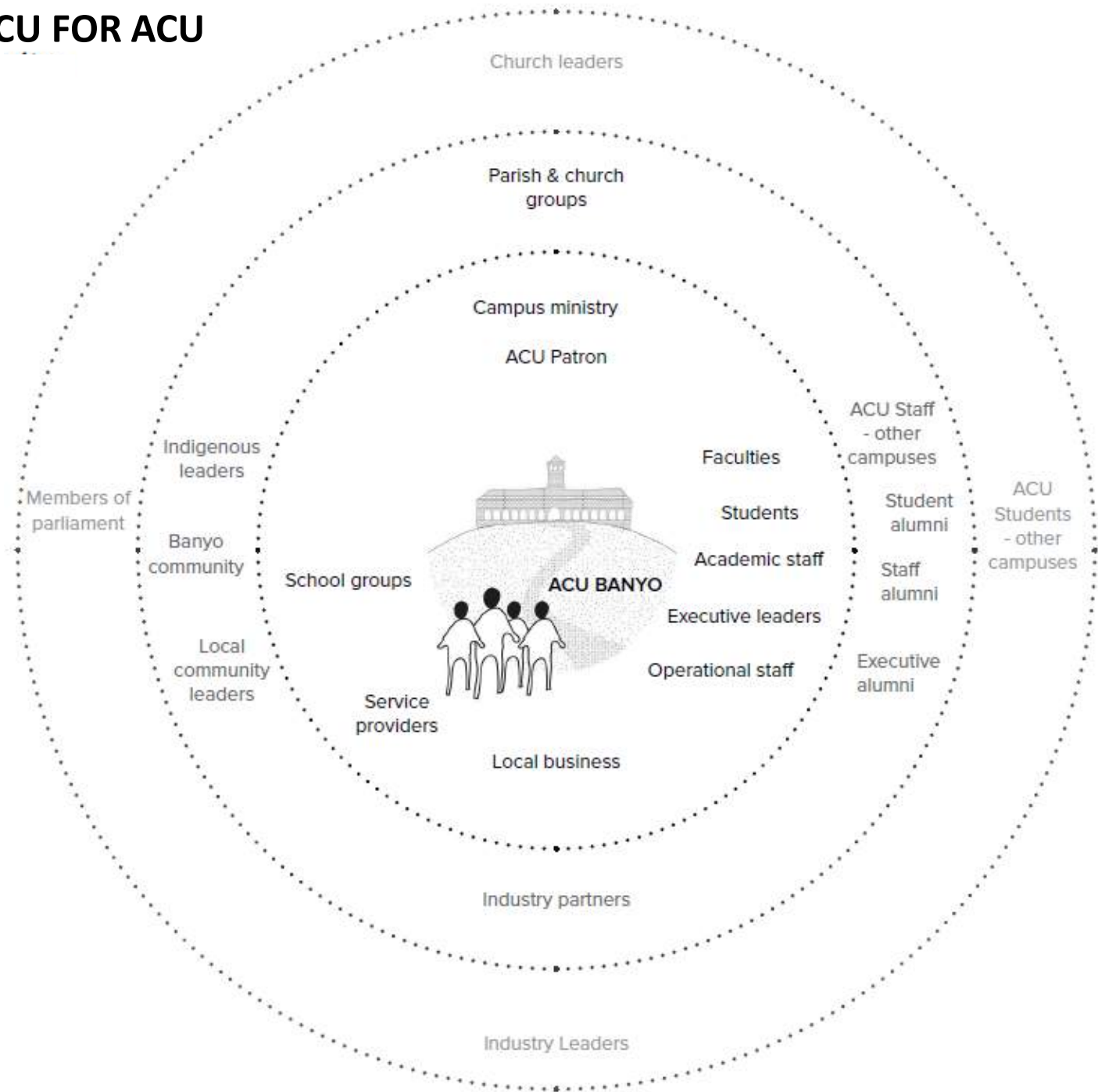
*'To live in a house is akin to living in a tree.  
There are many branches and each is a pleasant place to be.'*  
*Sou Fujimoto, Primitive Future*



A deeply considered concept  
saves time. A rushed  
stakeholder process will only  
bite + disappoint.



# COMMITMENT - OF ACU FOR ACU











HUMANITY  
PINNEX MOMENT  
WHOLENESS  
COMMUNITY  
UNIT

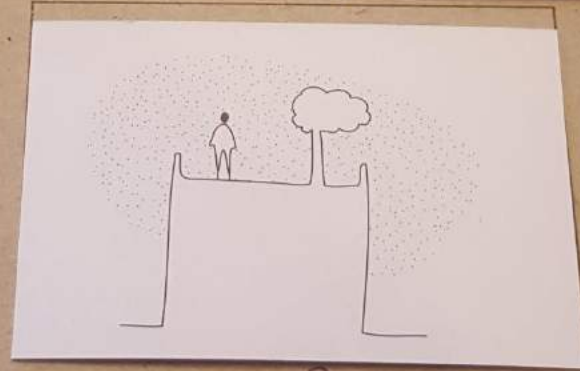
CORNER VOLUMES  
TRANSITION / EXPOSURE  
OF VIEWS  
CONTRAST ~ EXPANSIVE  
CATHOLICITY



- LICENSED



JOJURNEY  
IDEA OF  
GALLERY +  
EXHIBITION.  
ALL ART  
STUDENT ART



ENVIRONMENTAL - SUNSET, BREEZE, STAR GAZING  
VMTING BUILDING WITH NATURE

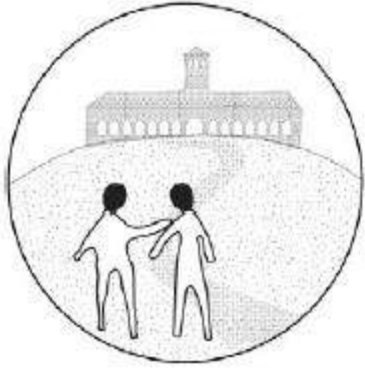
ROUNDINGS  
personal experience in space



# UNITY, WHOLENESS + COMMUNITY

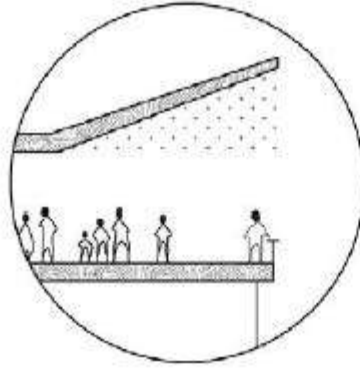


# STAKEHOLDER TRENDS



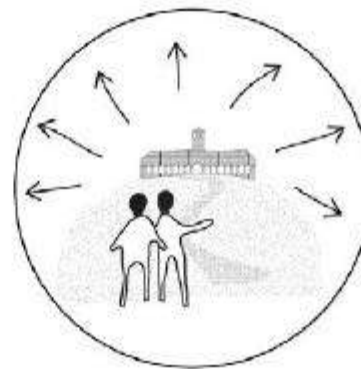
## BELONGING

Create a sense of belonging to the campus and its community.



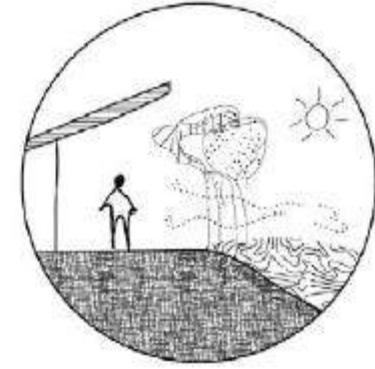
## HOST

Elevate ACU as a destination where they can host community and celebrate in a variety of ways.



## CONNECTION TO COMMUNITY

Connecting the community on campus and beyond through shared values and experiences.



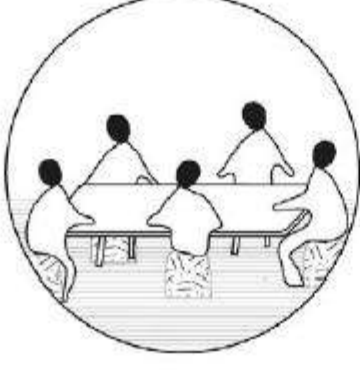
## CONNECTION TO NATURE

Create a sense of place where people can connect and identify with the local surroundings and beyond.



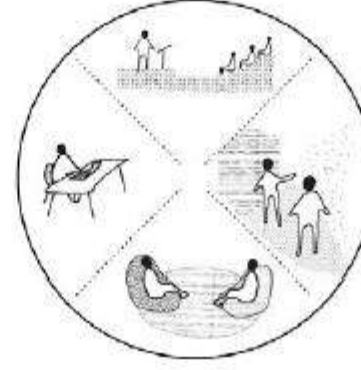
## REFLECT & EXPRESS

Fostering the full expression of self through providing opportunities for expression and reflection.



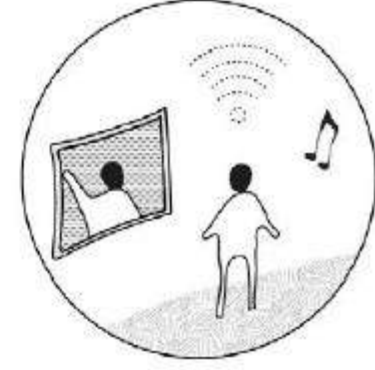
## COLLABORATE

Environments and settings which foster collaboration and participation.



## AGILITY

Flexible spaces and environments to adapt to diverse users and formats.



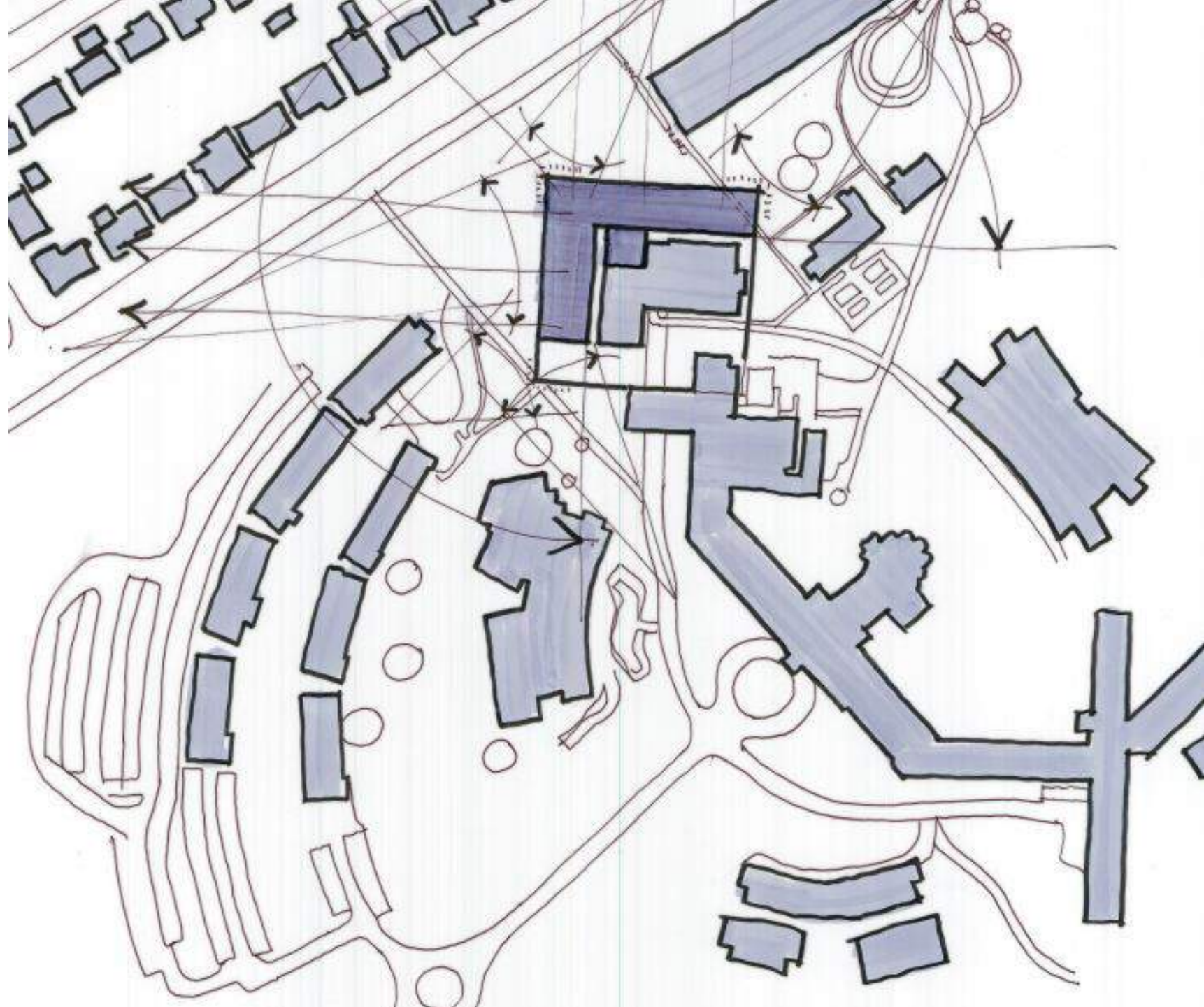
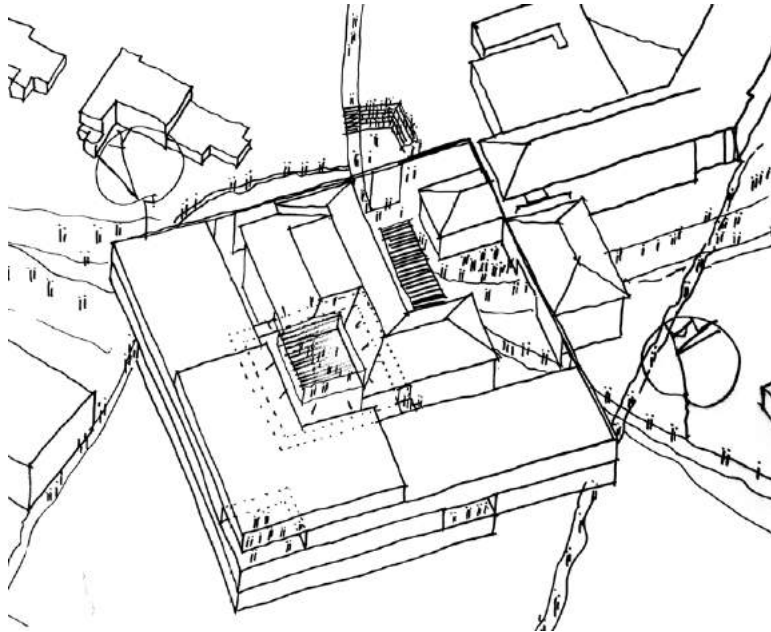
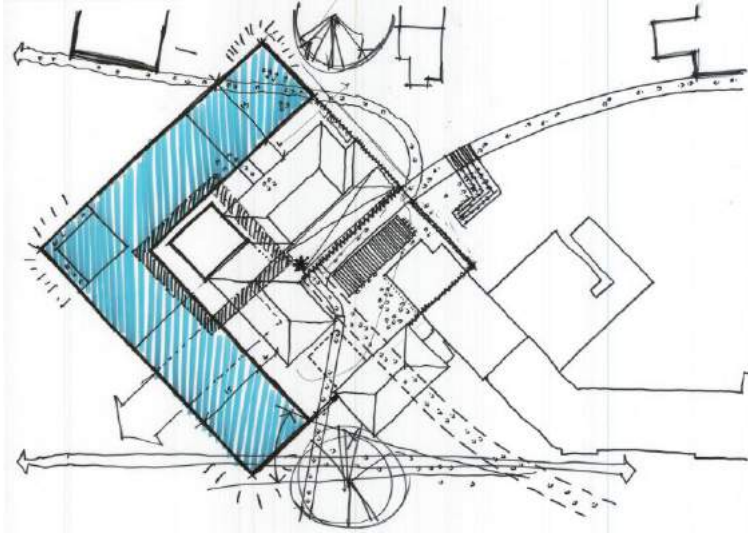
## FUTURE FORWARD

Spaces, systems and platforms to enhance natural integration of digital and physical interactions.



**Constructively challenge masterplans.  
Good masterplans are agile  
frameworks, not blueprints.**

## MASTERPLAN APPRAISAL





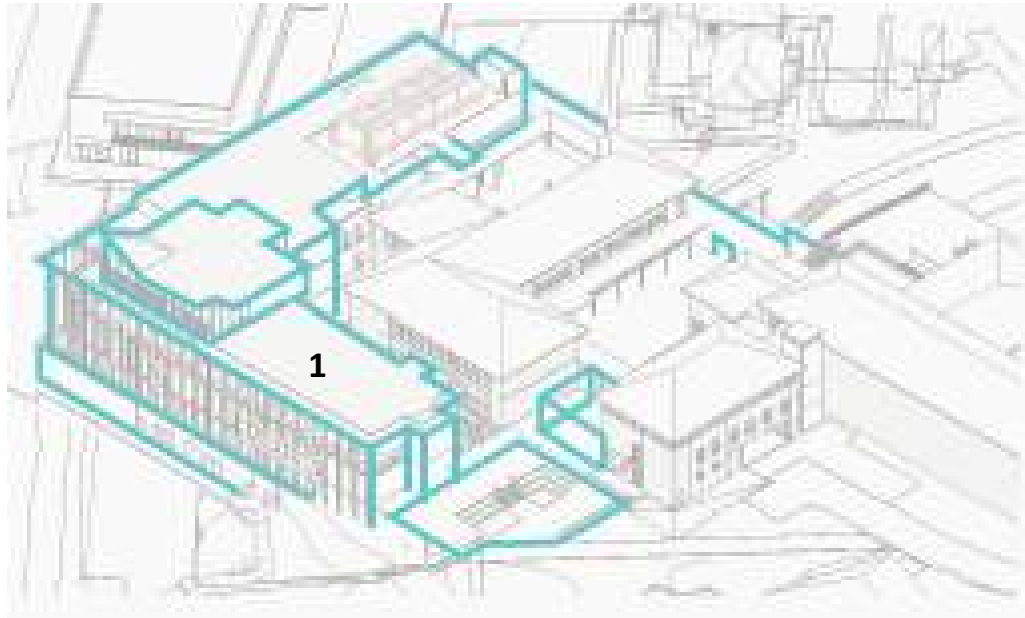
4,000    6,000    10,000

??????????

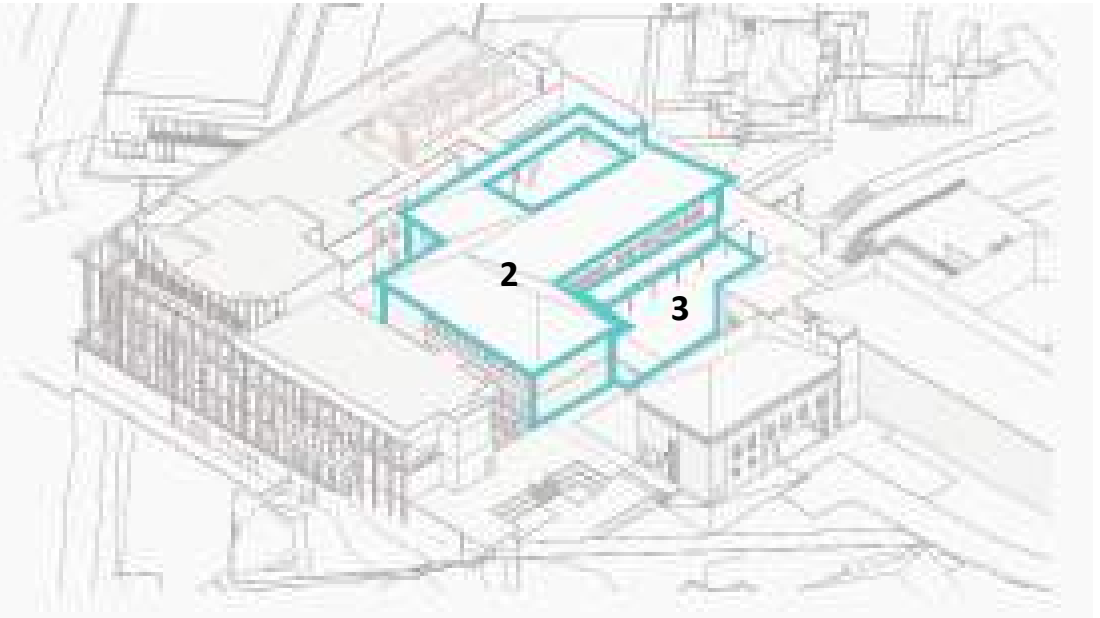
Stage visions to retain project control. Do not promise what you can't deliver.



## STAGING + COMMUNICATION

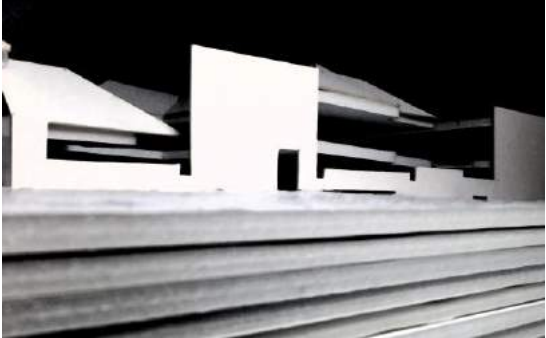
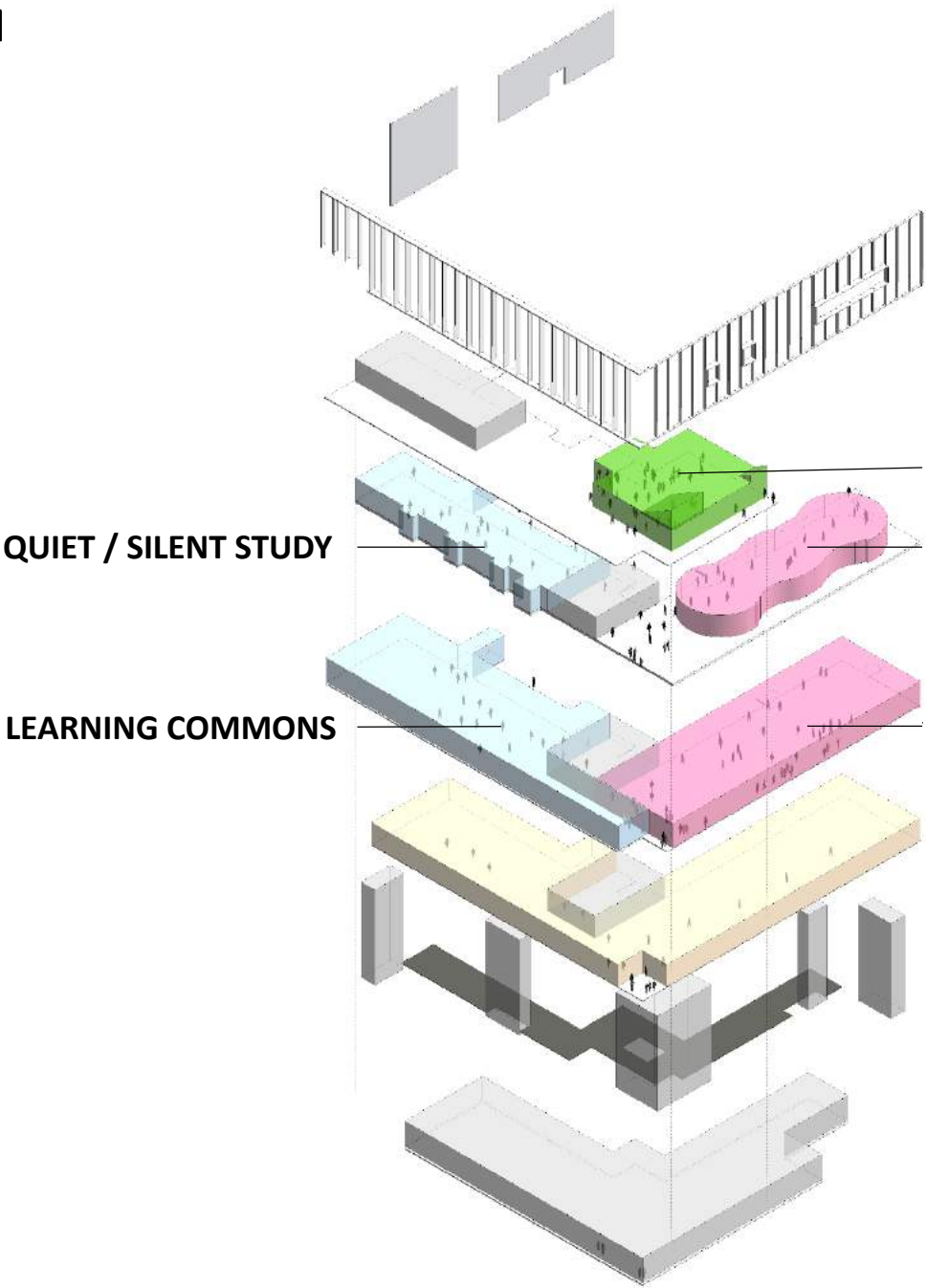


**STAGE 1    \$31.2M    6000 SQ.M**

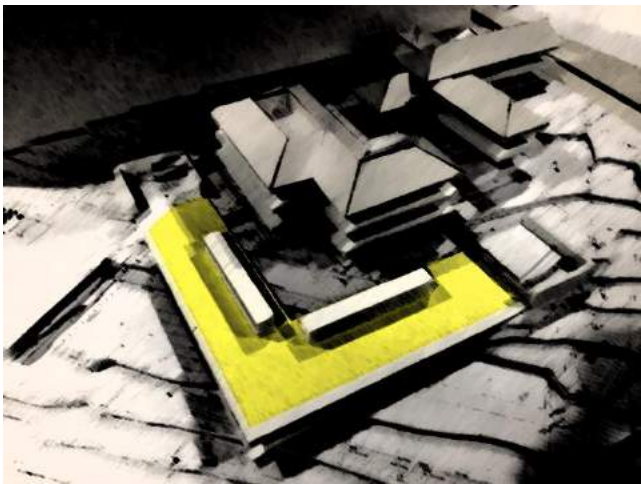
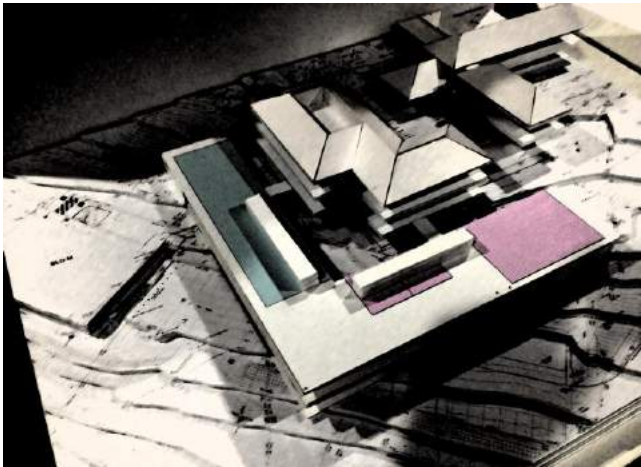
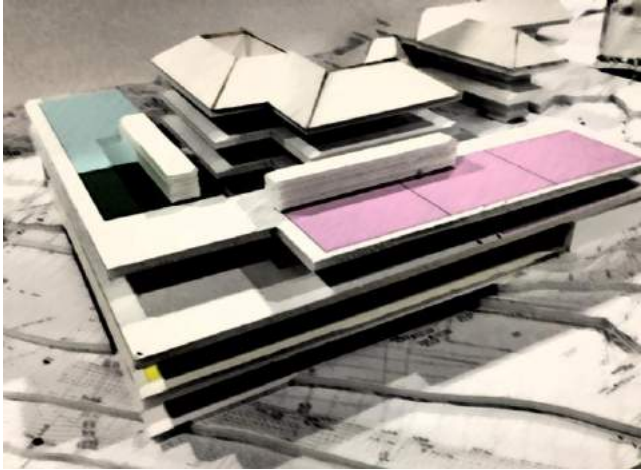


**STAGE 2    EXISTING LIBRARY REFURBISHMENT  
STAGE 3    ECOLOGICAL COURTYARD GARDEN**

**PROGRAM**



**UNITY**



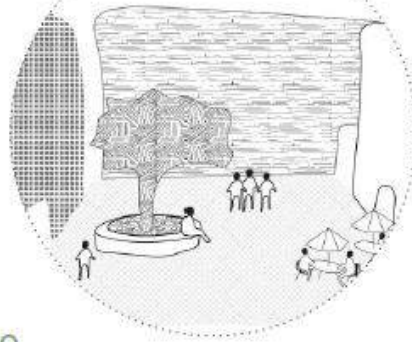
- 02 OCULUS**
- 01 INNOVATIVE LEARNING SPACE**
- G SEMINARS**
- 01 COLLOCATION OF STAFF**
- 02 PLANT / SERVICE DOCK**



# MERCY LANE – SENSORY EXPERIENCES

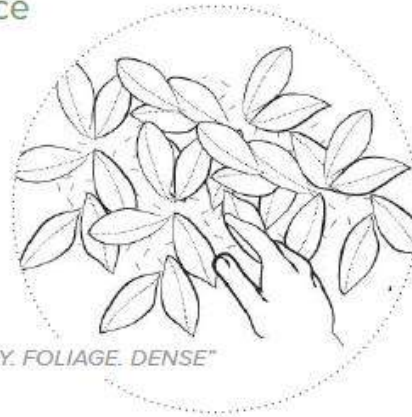
Key ideas that emerged from the card sort during the In-between Workshop

*"COMMUNITY - SENSE OF BELONGING"*

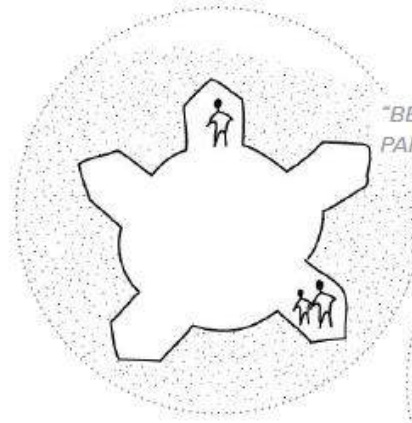


Key Ideas for the  
In-between Space

*"LEAFY. FOLIAGE. DENSE"*



*"BEING ABLE TO BREAK UP IN GROUPS, WHILE BEING PART OF WHOLE SPACES WITHIN A SPACE"*



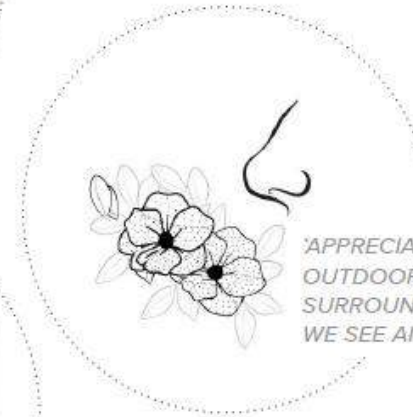
*"PLACES TO THINK AND WALK WITHOUT DISTRACTION"*



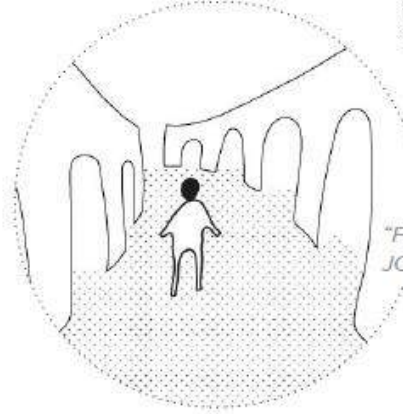
*"I LOVE READING AND THE BEST PLACE TO READ IS UNDER A TREE OR IN A NATURAL ENVIRONMENT. IT IS CALMING AND HELPS REMOVE STRESS. DOING STUDY IN A NATURAL PLACE WILL HELP STUDENTS SO MUCH."*



*"APPRECIATION FOR THE OUTDOORS CREATED BY SURROUNDINGS, WHAT WE SEE AND SMELL"*



*"FINDING A RANGE OF SPACES. A JOURNEY. SURPRISE AND DELIGHT"*



-01

MERCY LANE

ECOLOGICAL GARDEN





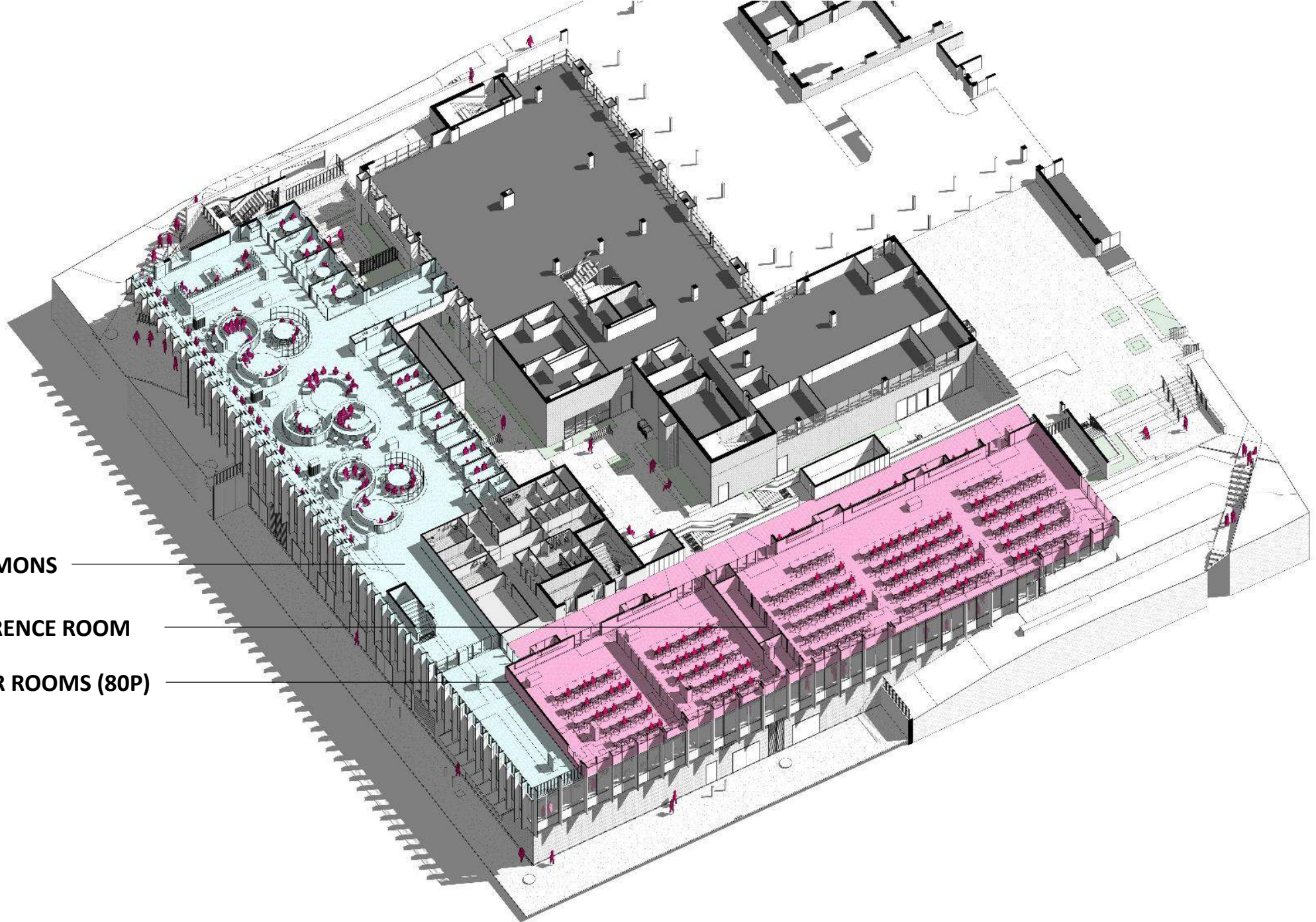
The future is exciting + uncertain.  
Plan + construct your library to  
enable future change.

G

LEARNING COMMONS

1 x 150P CONFERENCE ROOM

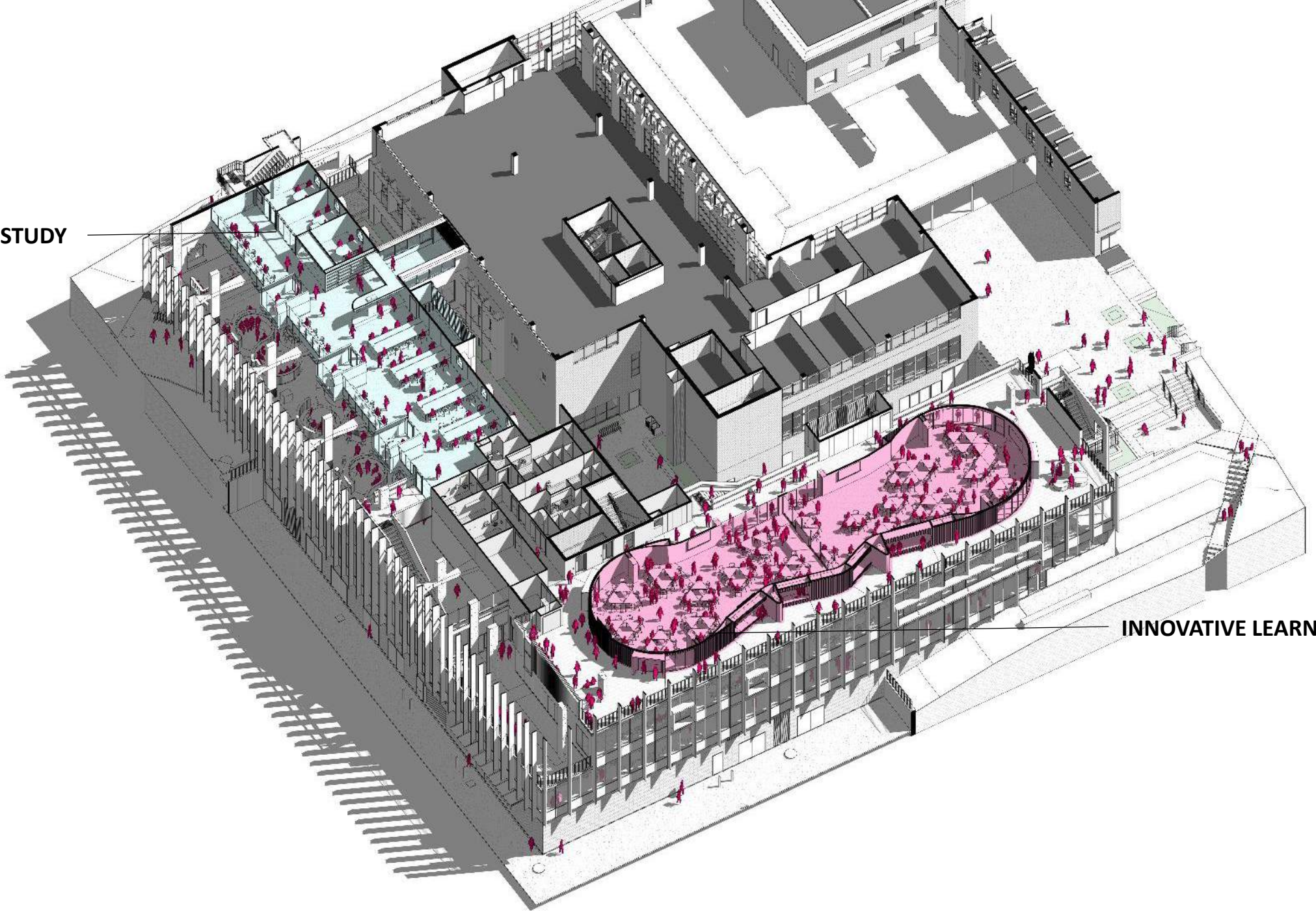
2 x 35P SEMINAR ROOMS (80P)





# L01

QUIET / SILENT STUDY

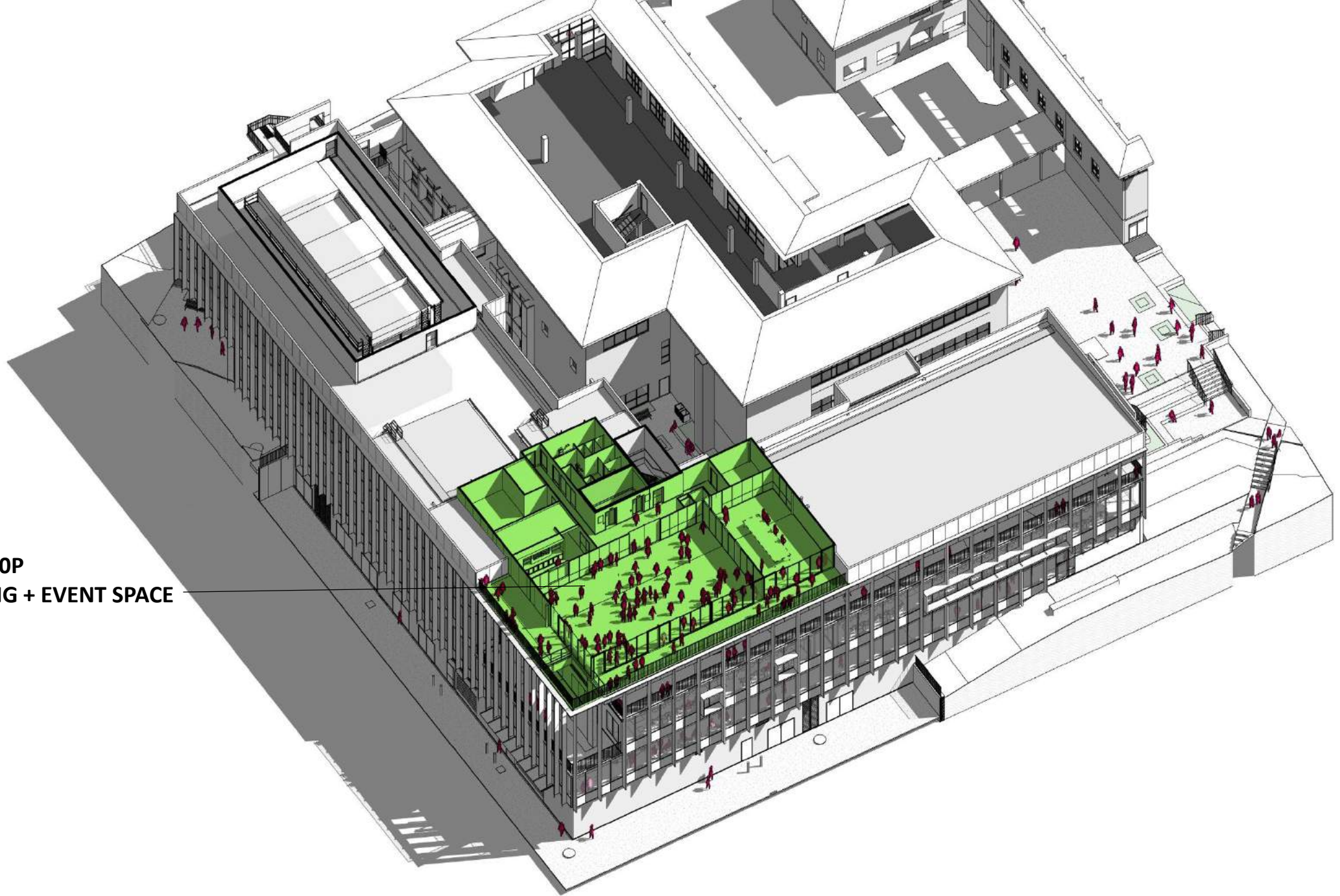


INNOVATIVE LEARNING SPACE



# L02

OCULUS 200P  
PARTNERING + EVENT SPACE





# MULTIPLE APPROACHES





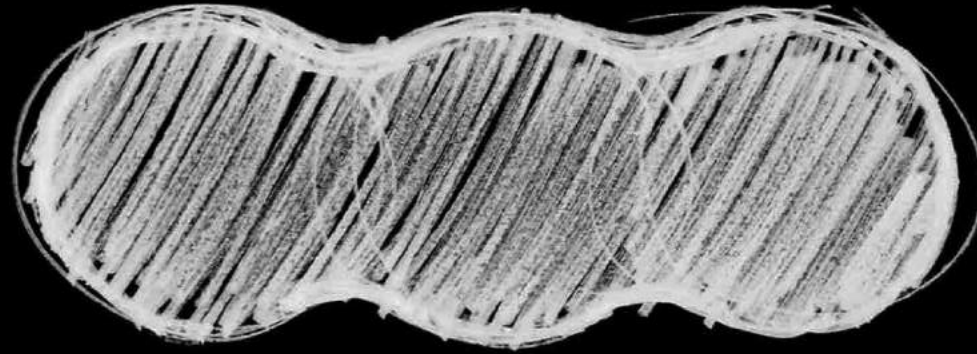
PURITY





# MATERIALITY

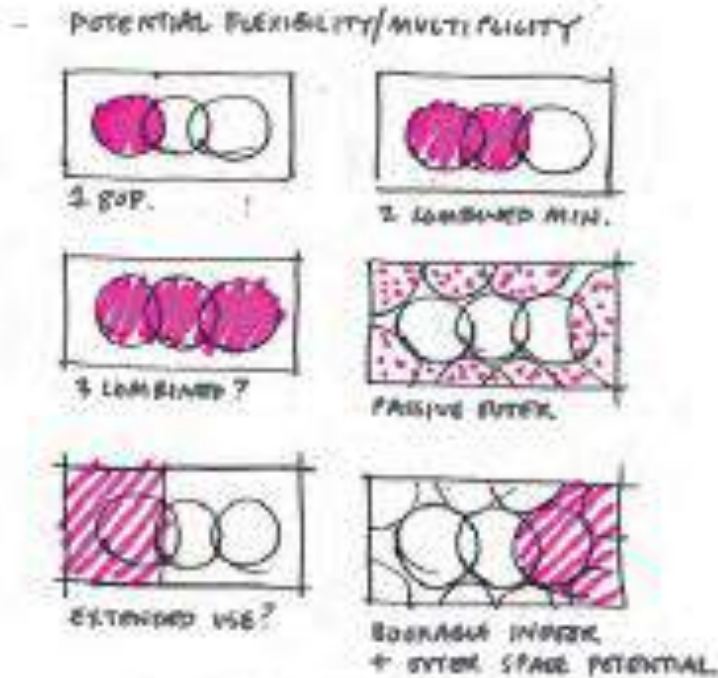
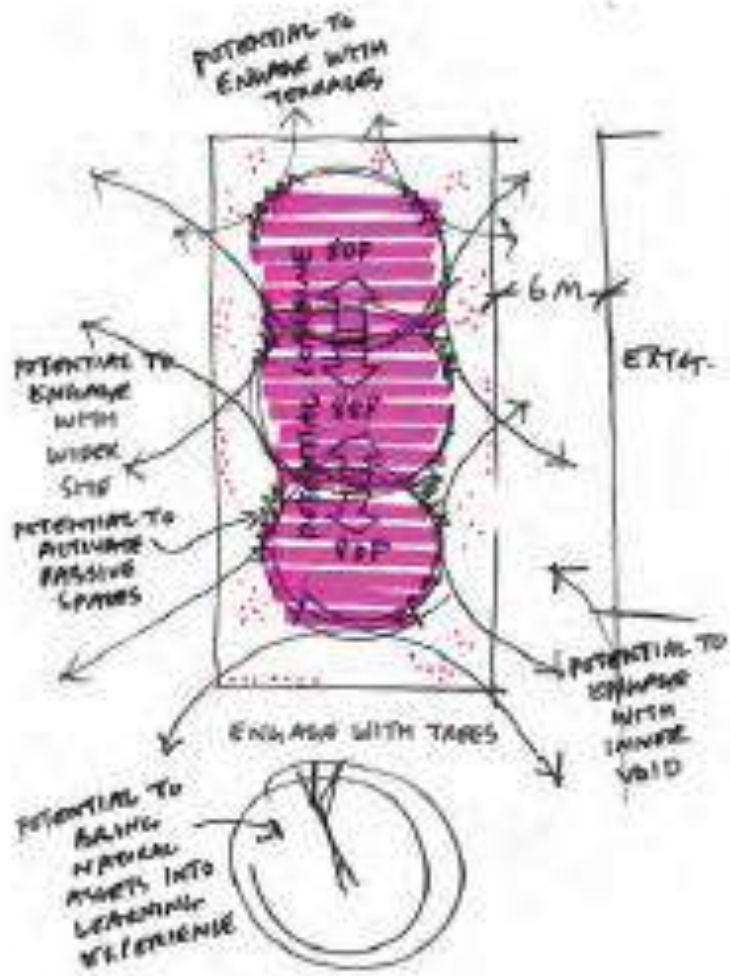




Timetabling + utilisation mapping highlights demands but responses need to avoid predictability + monotony. Embrace pedagogical needs through choice + innovation.

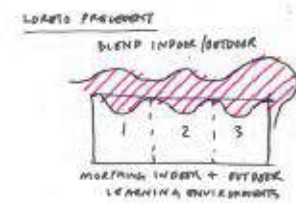


## DETAILED COLLABORATION

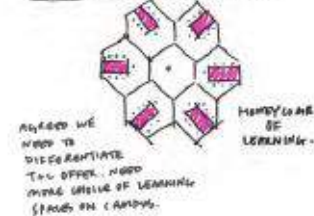


3 LOBBY ROOMS OF 80P

POTENTIAL FOR MULTIPLE  
CONFIGURATIONS  
AND SCALES OF SPACE



CIVIL PRESENTATION : SOP LONGHART 154.



USER REFERENCE TO JUDITH, MACHINERY, HOLY TRINITY

3 x B6P



AT LEAST 2 (MINUSTED)

240 } POTENTIAL FOR  
160 } MULTIPLE COMBINATIONS  
PASSIVE SPACE AS IMPACT  
AS LANDSCAPED LEASE

→ PASSIVE SPACE AS IMPORTANT  
AS LANDSCAPE LEAF



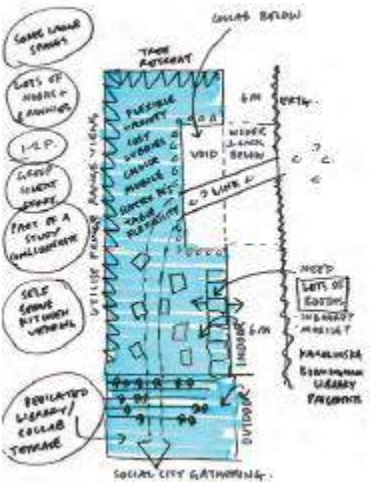
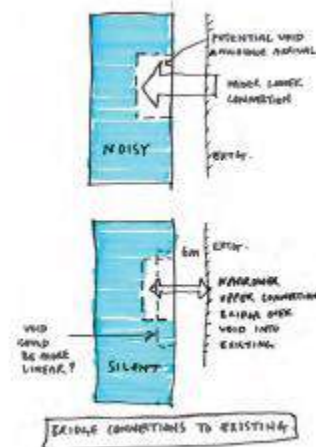
### Potential Student Activation of

**Framed view**



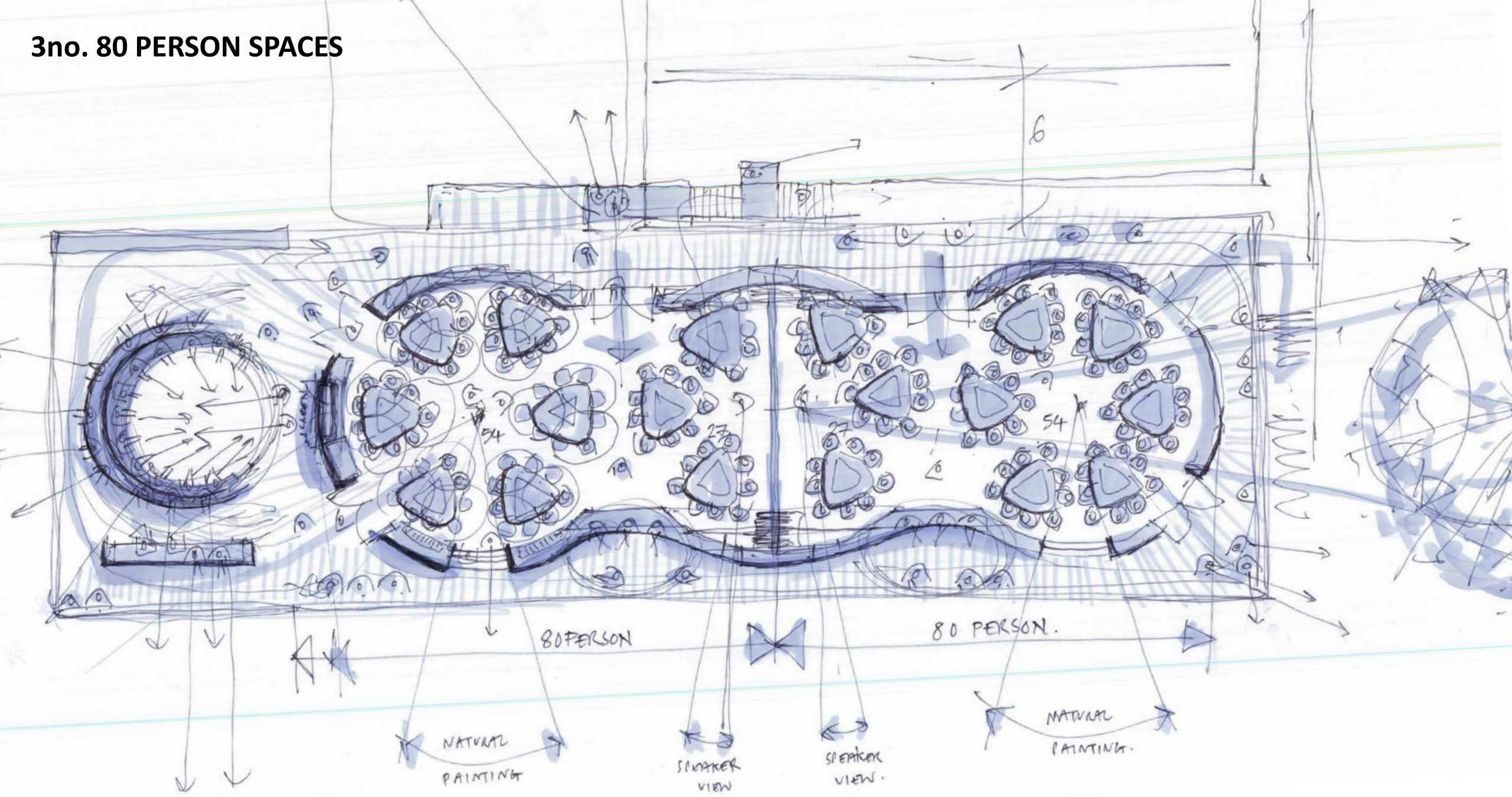
Provides perspective

*[Signature]* CITY ASST.





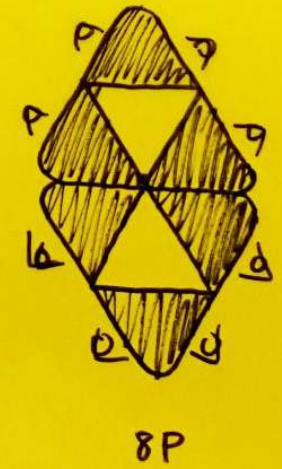
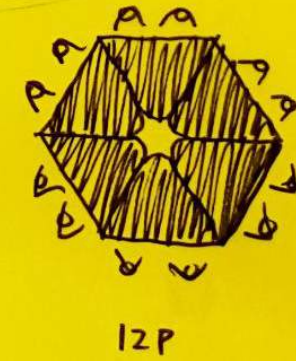
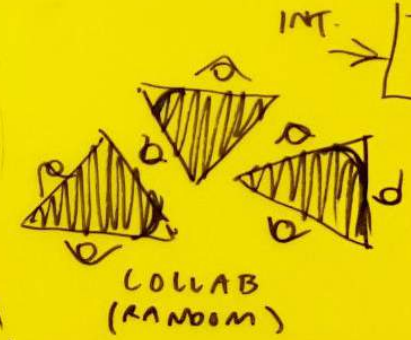
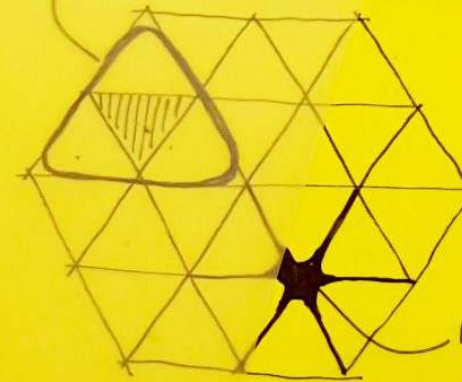
### 3no. 80 PERSON SPACES



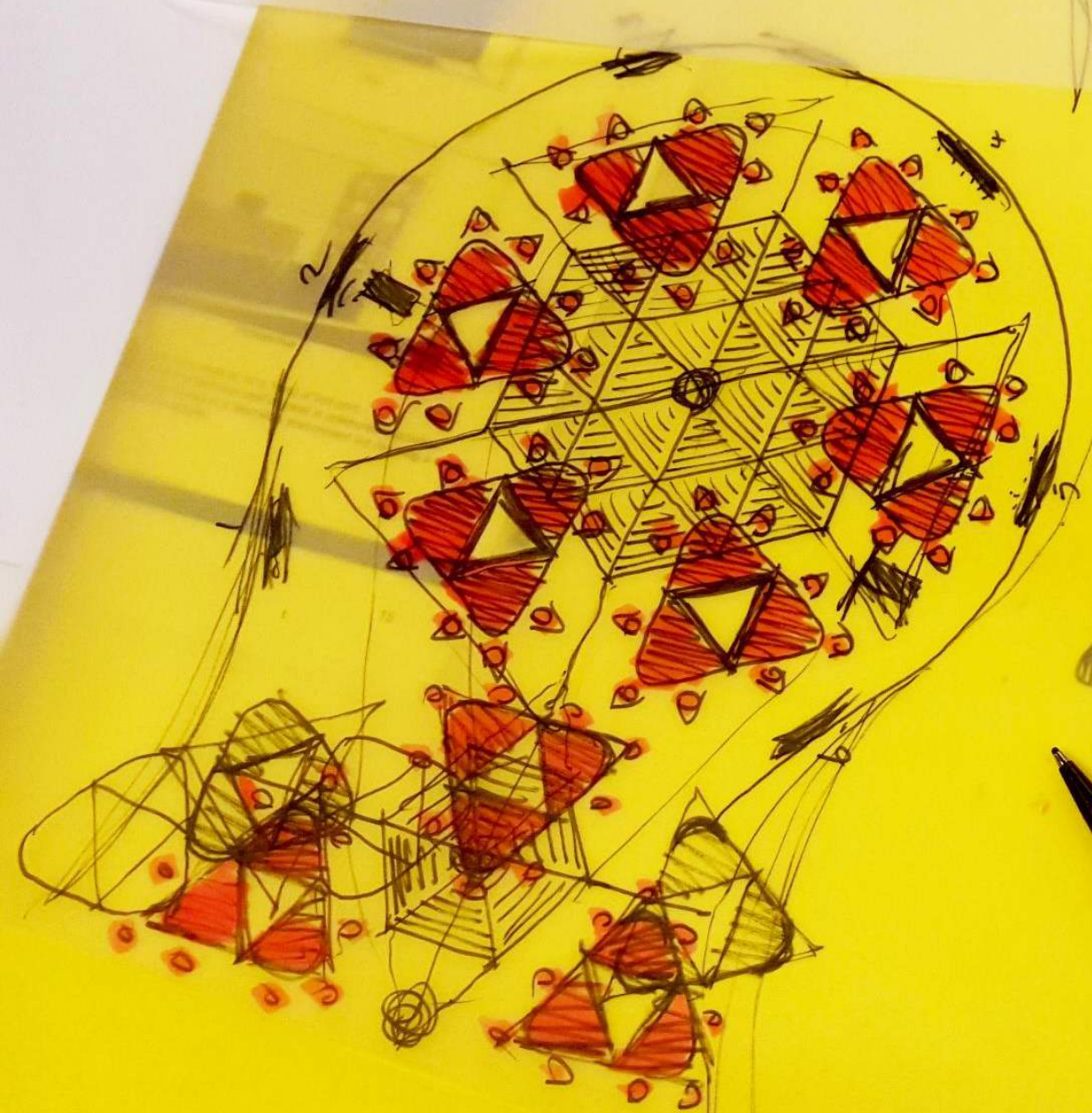


1 9 27 54 81 162

PLATEAU → CENTRE EQUILATERAL Δ  
IN ACCORDANCE WITH STUDENT FEEDBACK.

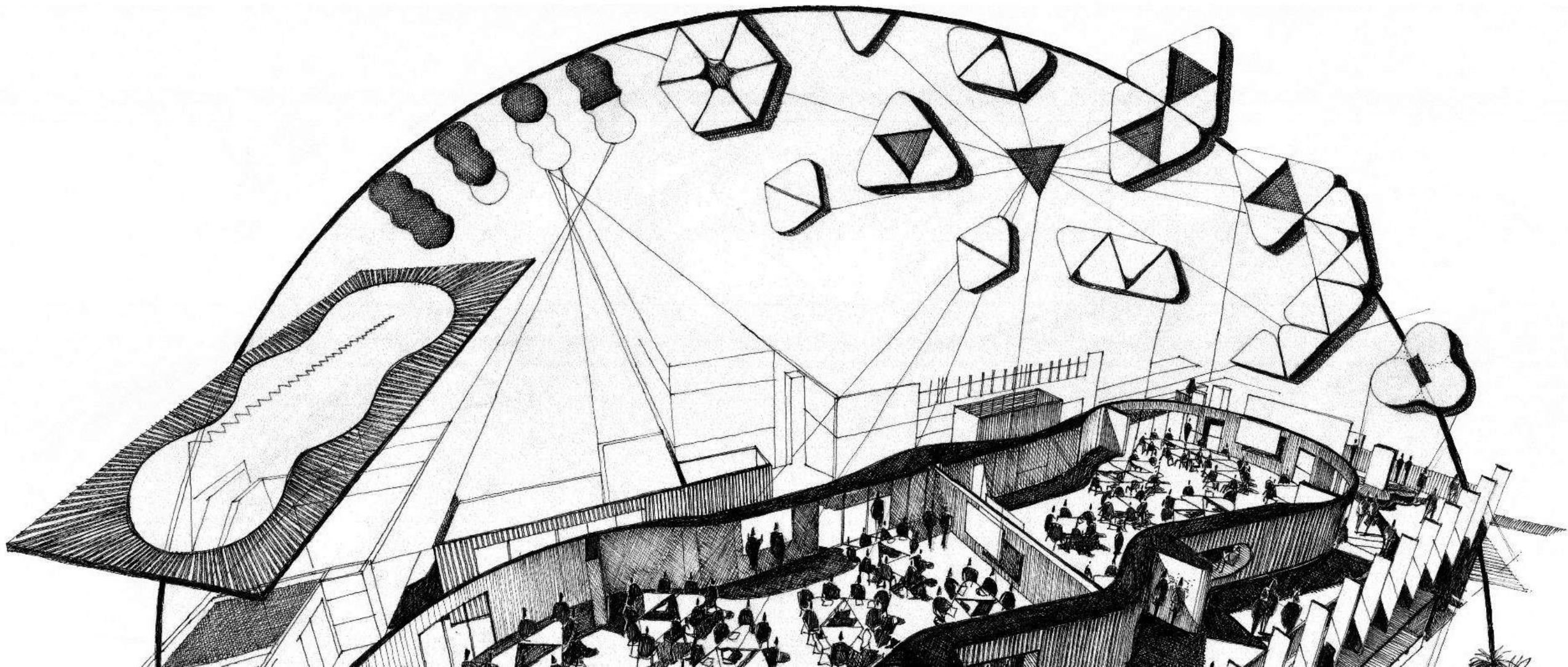


LESS LOST, MORE BEAUTY + FLEXIBILITY.





**INFORMED BY STUDENT CONSULTATION**

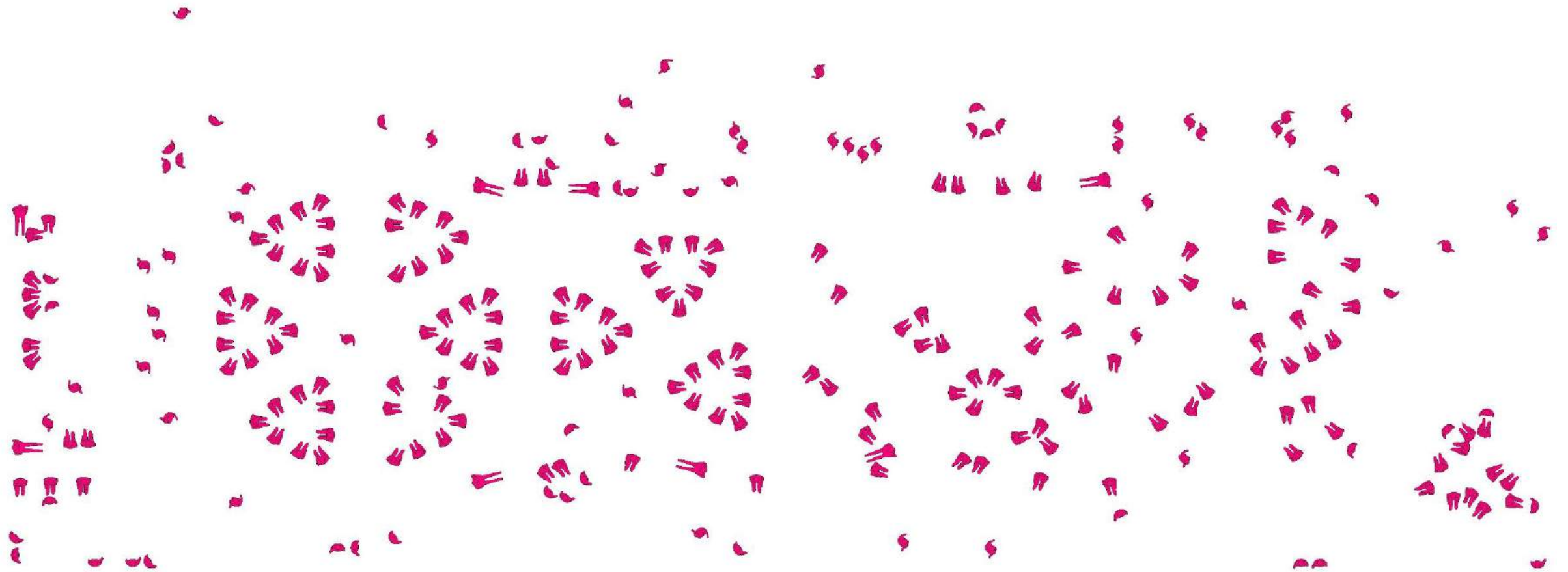




# FORMAL + INFORMAL



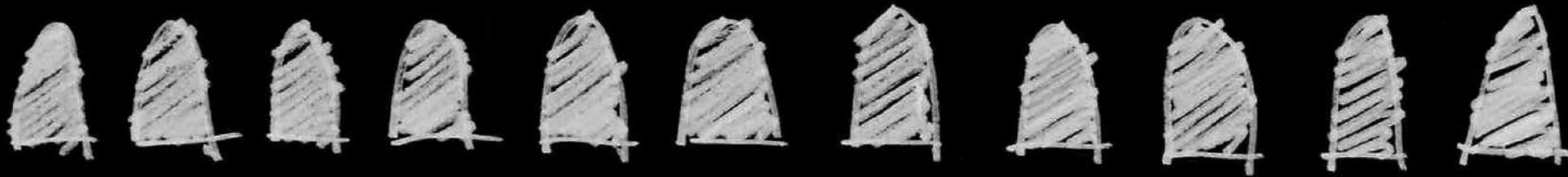
# INFINITE COMBINATIONS





## SOCIALISATION (RCP)

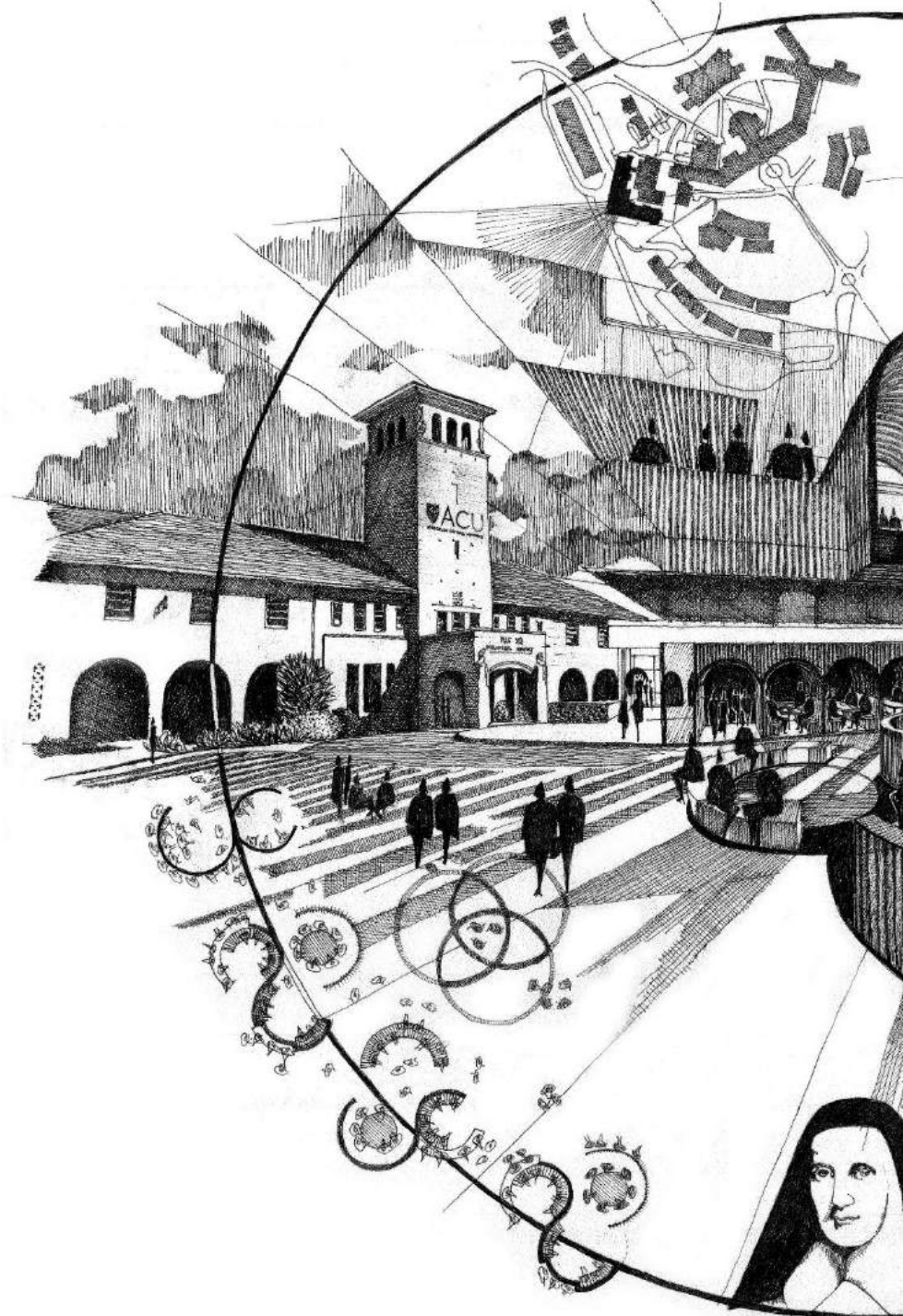
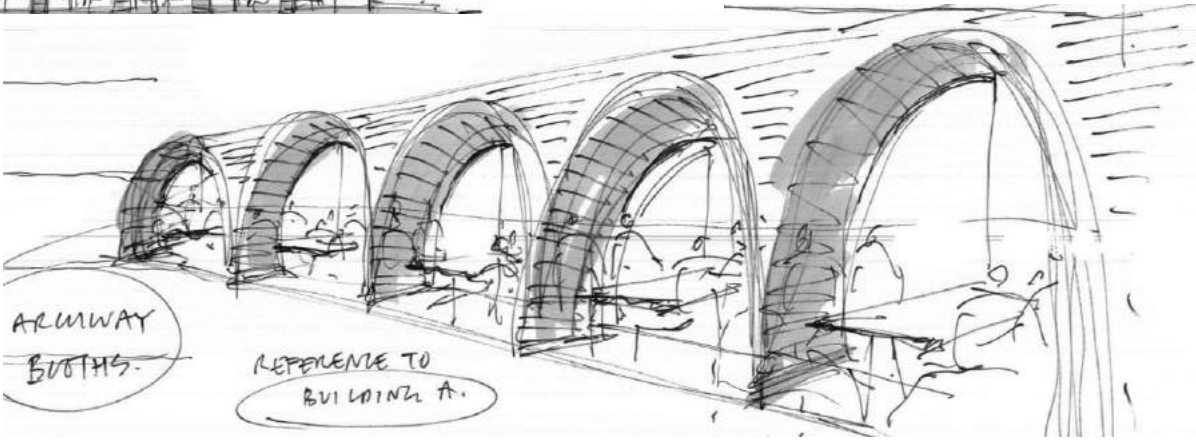
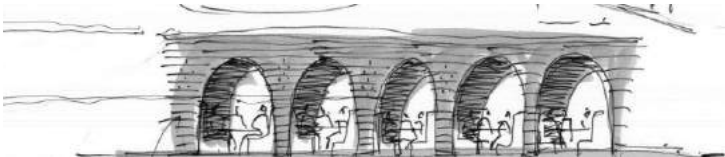
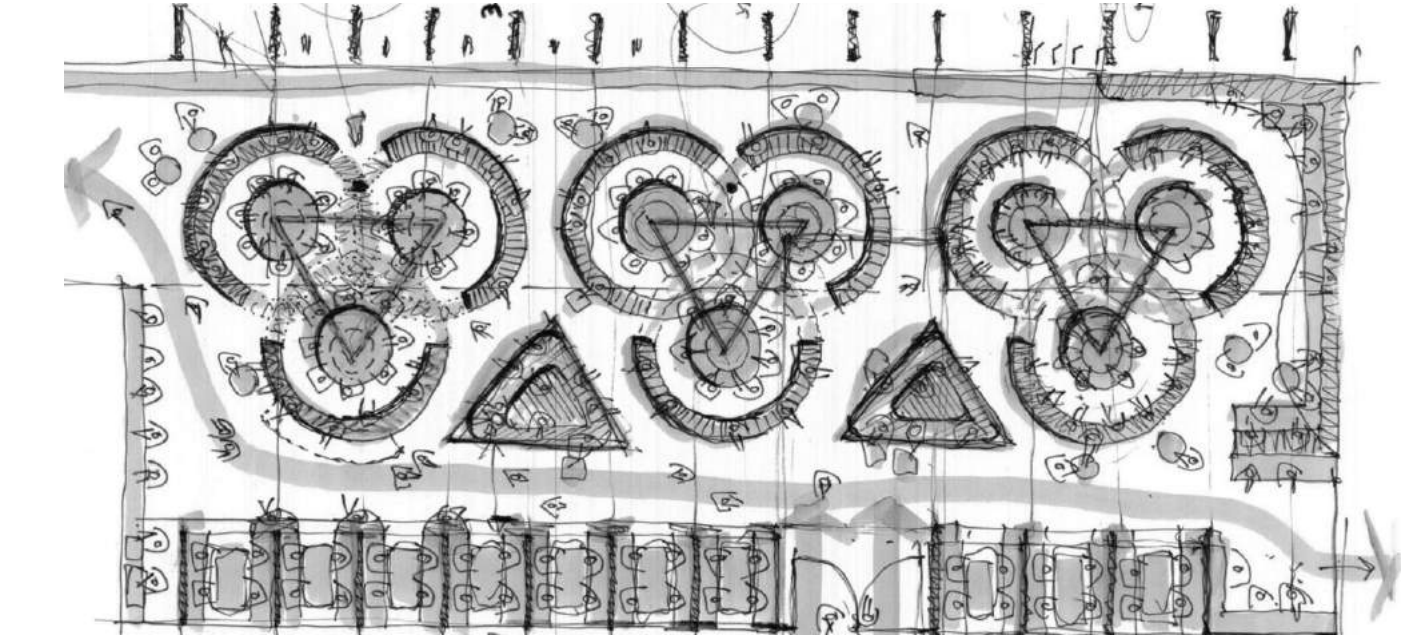




Design to support semester change  
+ the diverse needs of  
socialisation + study.



HOLY TRINITY INSPIRED LEARNING SETTINGS







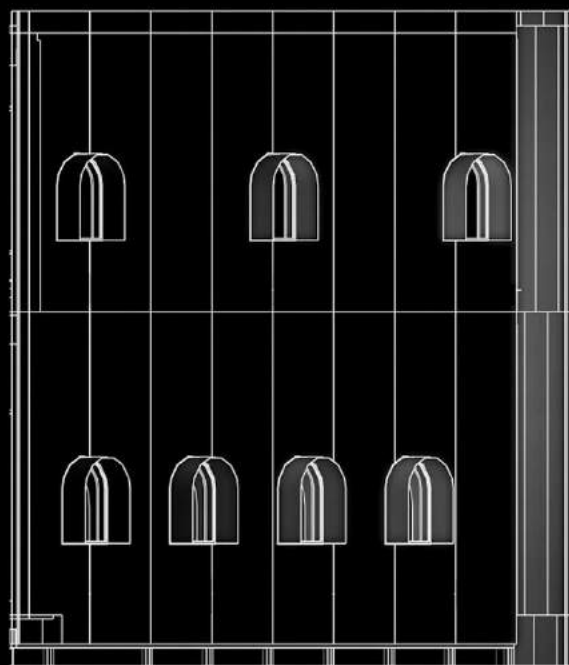




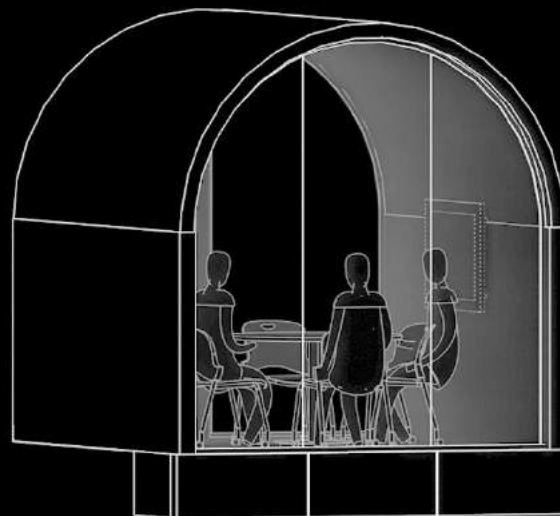




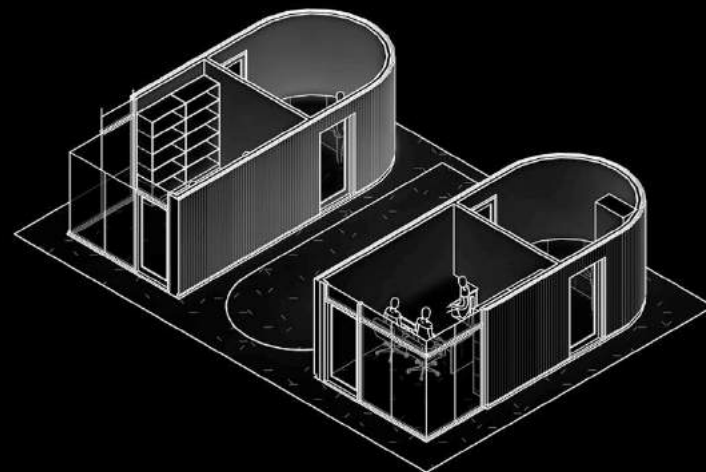




**MERCY LANE ARCHES**



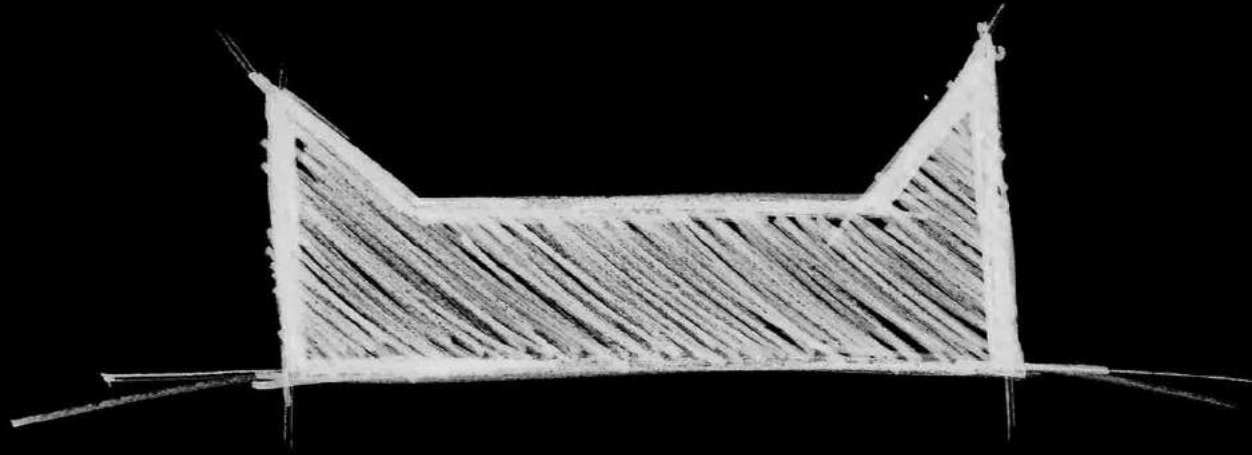
**SILENT STUDY**



**QUIET ROOMS**





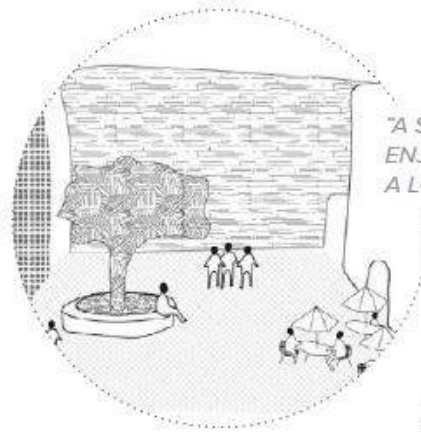
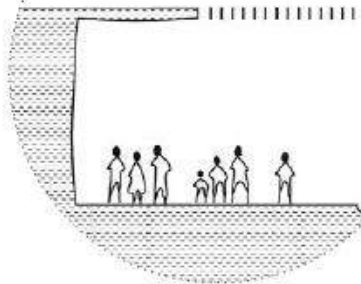


Enable the staging of events that support  
sharing + enterprise. Unite such places  
with the wider community + beauty.

---

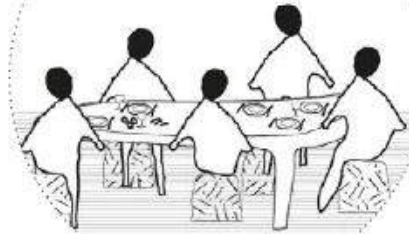
# OCULUS EXPERIENTIAL WORKSHOP

"COMMUNAL SPACES FOR EVERYONE,  
PROTECTED FROM THE ELEMENTS BUT OPEN"



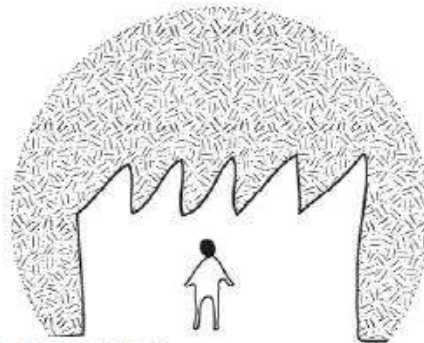
"A SPACE THAT YOU'D LIKE TO  
ENJOY, TO TAKE TIME AND RELAX IN  
A LOVELY SETTING."

"HUMANITY, DINNER MOMENT,  
WHOLENESS, COMMUNITY, UNITY"

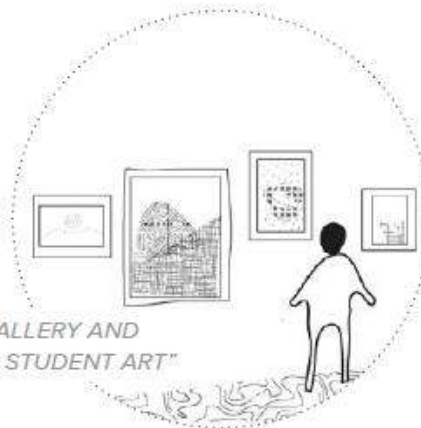


Key Idea for the  
Oculus Space

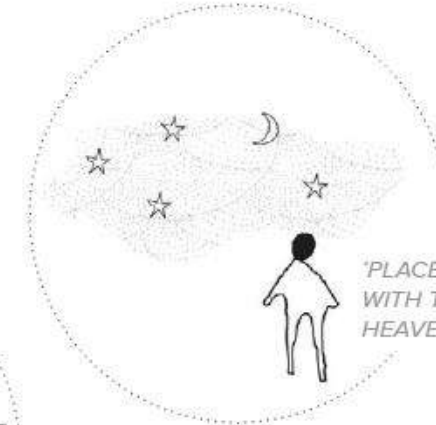
"CORNER VOLUMES, TRANSITION/  
EXPLOSION OF VIEWS, CONTRACT EXPAND"



"JOURNEY, IDEA OF GALLERY AND  
EXHIBITION, ACU ART, STUDENT ART"



"PLACE FOR CONNECTION  
WITH THE SKY AND THE  
HEAVENS"

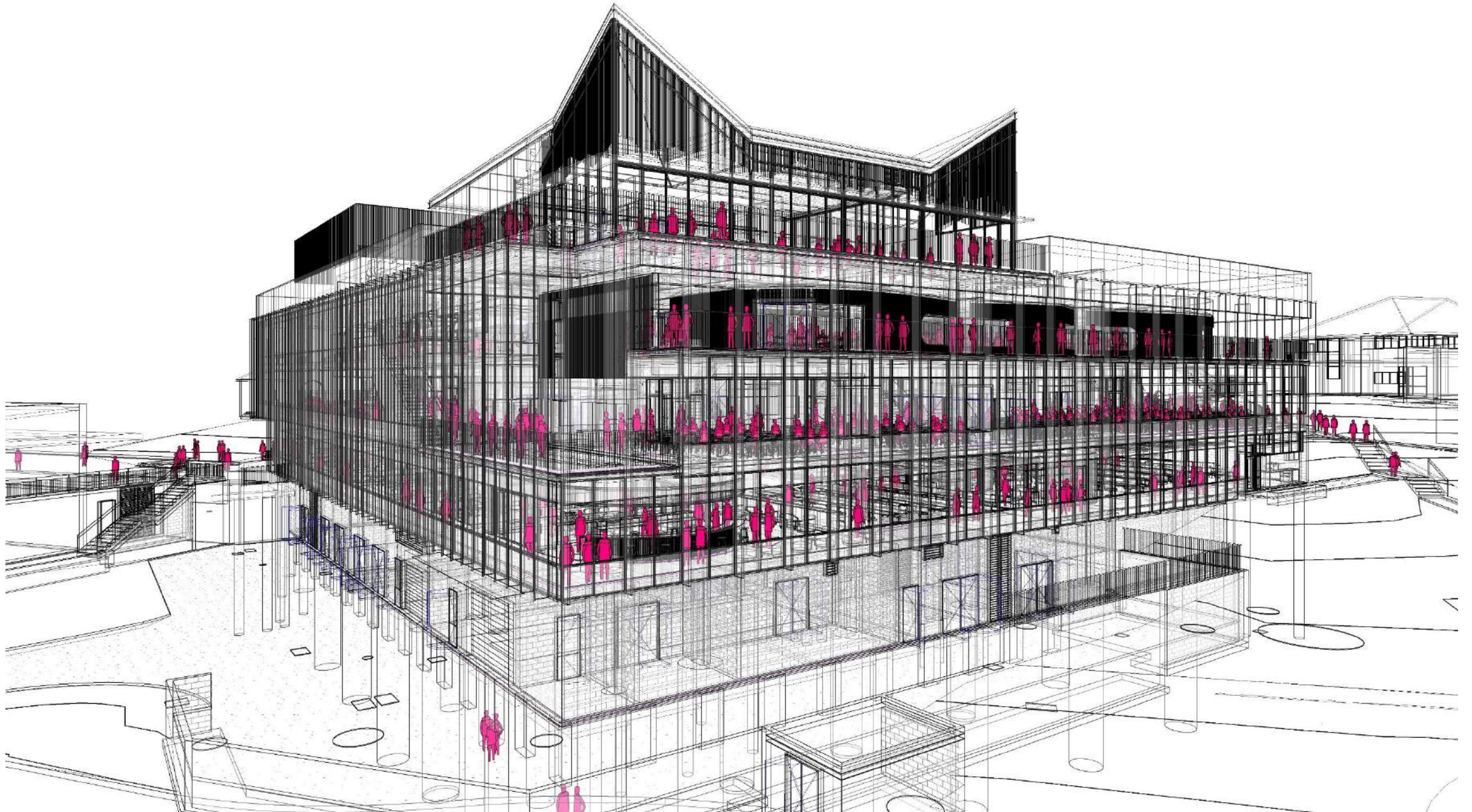




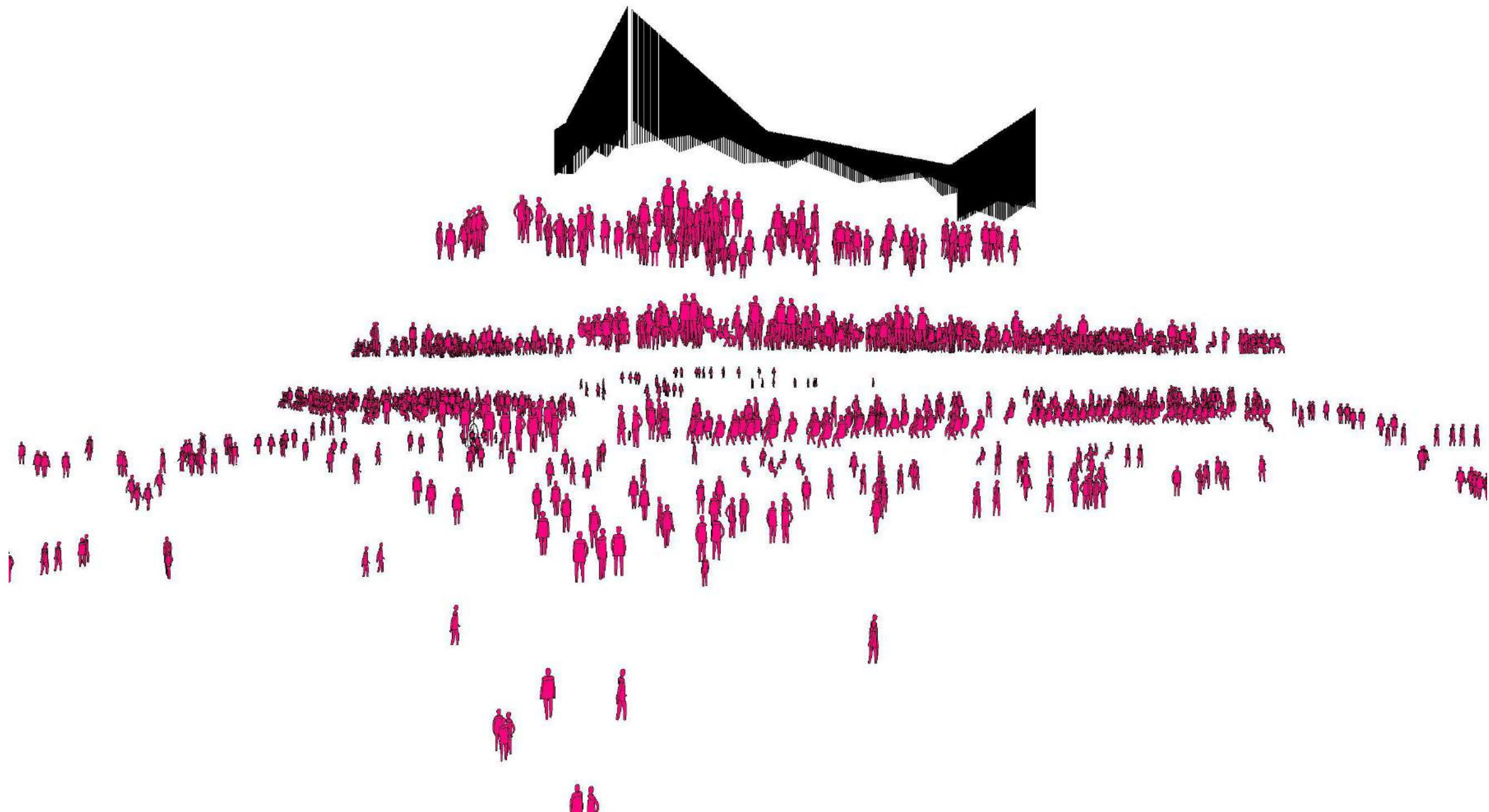




# ELEVATION OF PEOPLE











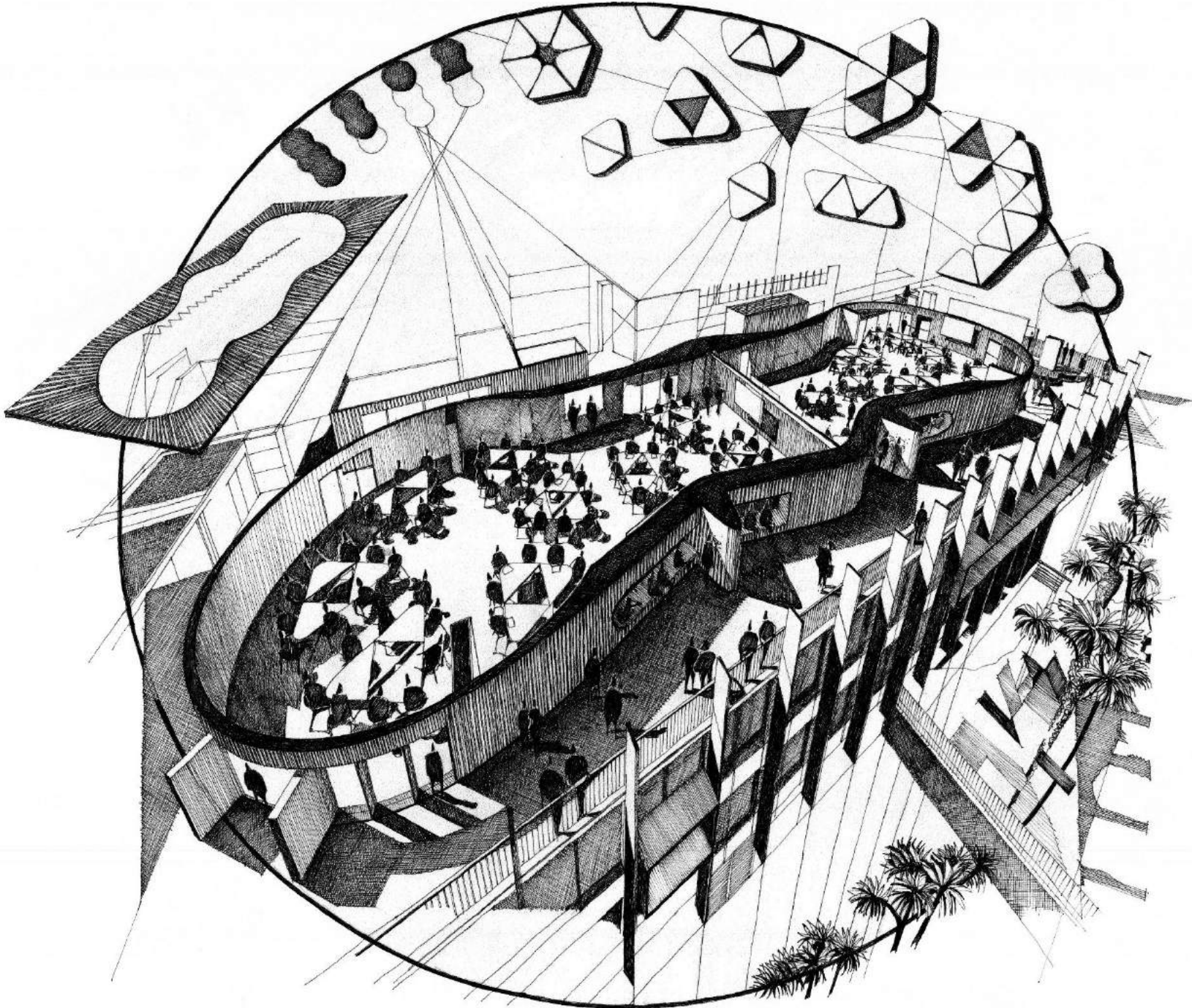




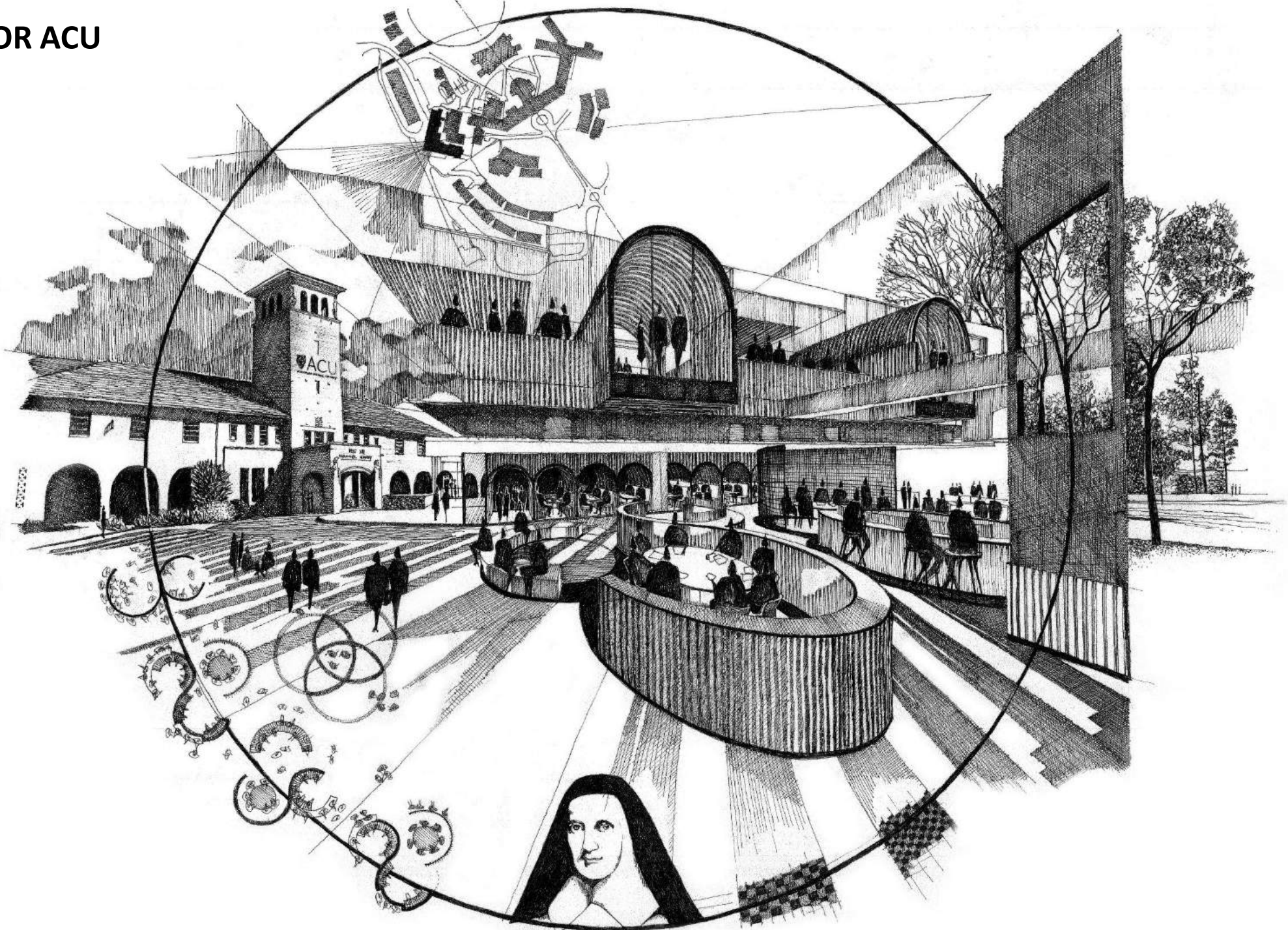
Dare to be different + embrace  
pedagogical needs through  
choice + innovation.



BEYOND DEMAND

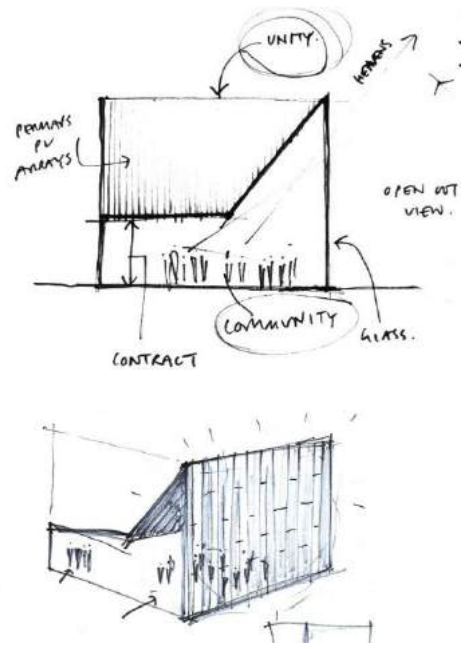


AFFINITY – OF ACU FOR ACU



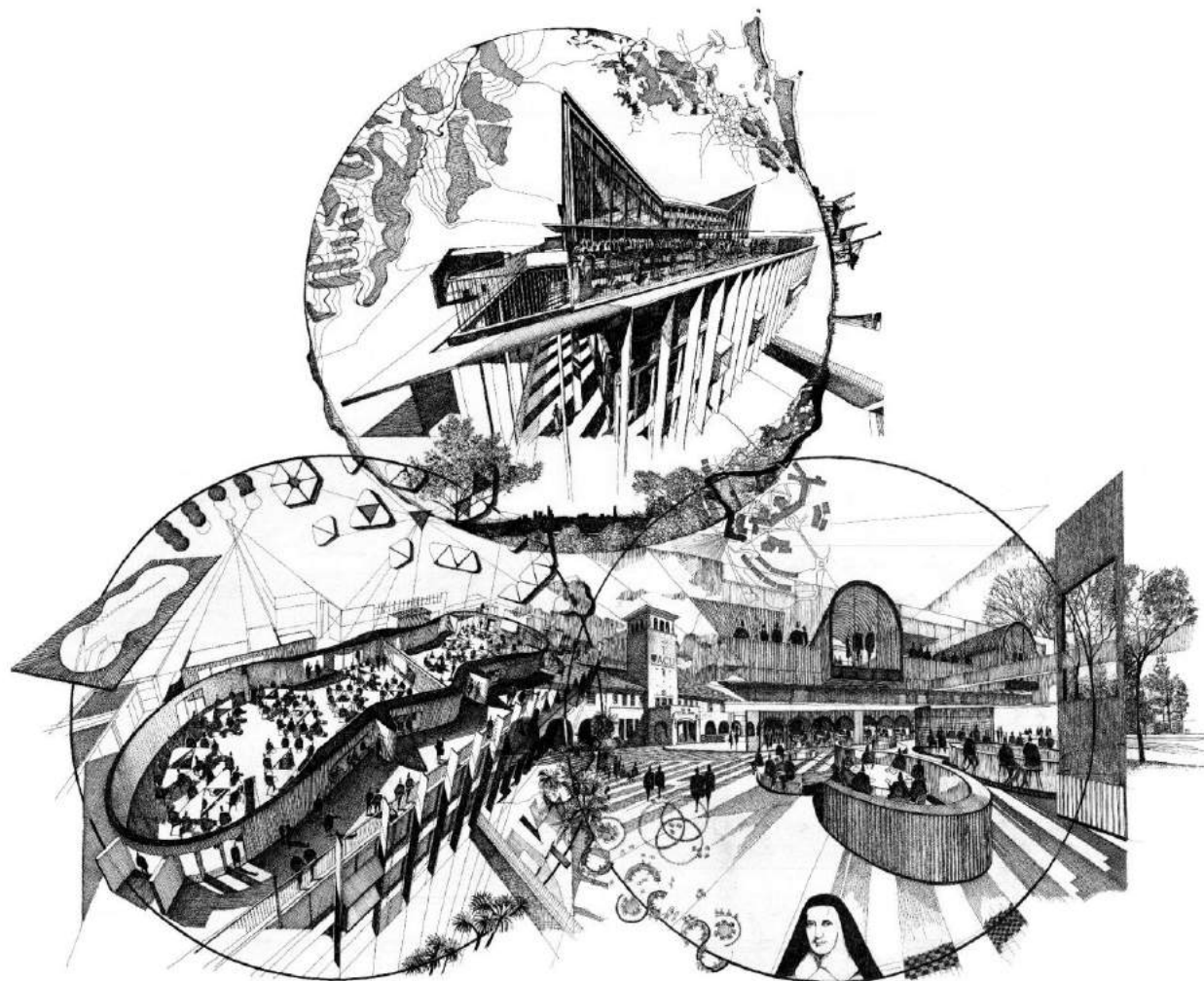


MEMORABLE EVENTS



Remember that a magical place  
also needs to be a  
functional space.





OF ACU, FOR ACU